

Hydraulic Winches and Hoists for the Oil & Gas Industry



TiD-extra
Industrial Technologies d.o.o.



Table of Content

- **Liftstar LS Series Hydraulic Winches**
 - Capacity 150 to 5000 kg
- **Liftchain LC2H Series Hydraulic Chain Hoists**
 - Capacity 6 to 100 ton
- **BS/LBS/ULBS Series BOP Handling Hydraulic Systems**
 - Capacity 20 to 200 ton

Hydraulic Winches & Hoists For the Oil & Gas Industry

- Ingersoll Rand have been developing a range of **hydraulic winches and hoists for the oil & gas industry**, particularly suited to the offshore and land rigs.
- The standard products are designed to **operate in ambient temperature ranging from - 10°C to 65°C.** (-20°C optional)
- They are manufactured at the IR facility in Douai France which is **ISO 9001 certified.**



**Your Safety is
our Number 1
Priority !**

Liftstar LS Series Hydraulic Winches

150 to 5000 kg Load Capacity

The Liftstar LS Series hydraulic winches set new standards for safety and reliability. They are particularly suited for tough applications on offshore and onshore drilling rigs.



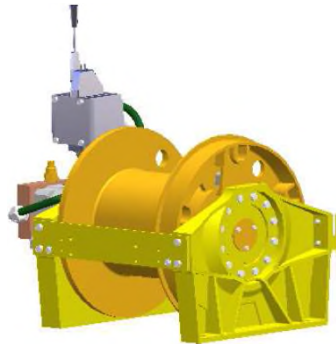
Liftstar LS Series Hydraulic Winches

150 to 5000 kg Load Capacity

- 3 models for utility applications (LS2-600H40 / LS2000H30 / LS5000H75)
- 1 model for Man Riding applications (LS2-150HLP)



600 kg Utility Winch
LS2-600H40(GC)



2 ton Utility Winch
LS2000H30(GC)



5 ton Utility Winch
LS5000H75(GC)



150 kg Dedicated
Man Riding Winch
LS2-150HLP

Note: LS hydraulic units are rated at Top Layer

Liftstar LS Series Hydraulic Winches

Utility Models - 600 to 5000 kg Load Capacity

Features

- All steel construction
- Design factor 5:1 on load bearing parts
- Hydraulic orbital motor for LS2-600 and axial piston motor for other units
- Overload protection device
- High efficiency planetary gear box
- Automatic fail safe disc brake
- Dynamic lowering control by counter balance valve avoiding friction of brake
- Proportional local throttle control
- Operating temperature: -10°C to + 65°C
- Suitable for Zone 1 and 2 as per ATEX directive 94/9/EC
- Very low noise level (much quieter than air operated unit)
- Low energy cost
- Meets worldwide standards

Note: LS hydraulic units are delivered with a Declaration of Incorporation (no CE mark)

Liftstar LS Series Hydraulic Winches

Utility Models - 600 to 5000 kg Load Capacity

Main Options

- Low temp design (-20°C)
- Remote control station (joystick type)
- Main power emergency stop device
- Long drum version
- Drum grooving (except for LS2-600H)
- Drum guard (stainless steel)
- Skid frame incorporating drip pan (except on LS2-600H)
- Automatic spooling device (LS5000H only)
- Press roller (Except on LS2-600H)
- Pulling versions (Pullstar series featuring a drum clutch. Load rating is at 1st layer)
- Offshore paint including sandblasting
- Third party witness test

Note: Most common options are the same as those offered on pneumatic units.
Check price list for detailed information

Liftstar LS Series Hydraulic Winches

Utility Models - 600 to 5000 kg Load Capacity

Technical Specifications

Model Number	Rated Capacity @ Top Layer	Rated pressure	Lifting Speed with Rated Load @ Top Layer	Max. Oil Flow	Rope Diameter	Rated Rope Capacity	Max. Rope Storage Capacity	Weight Without Rope	Motor Type
	kg	bar	m/min.	l/min.	mm	m	m	kg	
LS2-600H40	600	100	20	25	6,5	58	89	52	Orbital
LS2-600H40GC	600	100	20	25	6,5	121	183	59	Orbital
LS2000H30	2000	150	30	65	13	103	156	300	Piston
LS2000H30GC	2000	150	30	65	13	142	230	355	Piston
LS5000H75	5000	150	30	142	20	87	144	850	Piston
LS5000H75GC	5000	150	30	142	20	188	309	985	Piston

Note: the LS1500 does not exist in hydraulic version.

Liftstar LS Series Hydraulic Winches

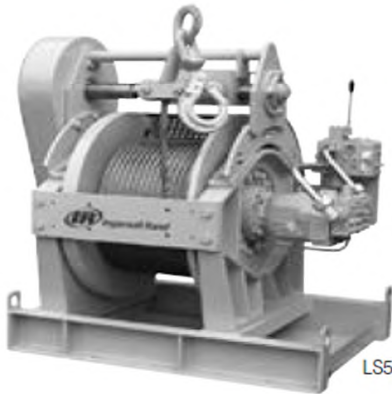
Utility Models - 600 to 5000 kg Load Capacity

Model Driver (How To Order)

Specify complete model code as shown. To order factory fitted options add the appropriate letter suffix to the standard model code. Accessories should be ordered separately.

Example :

<p>LS</p> <p><u>Series</u></p> <p>LS = LIFTSTAR® PS = PULLSTAR® LS2 = 2nd Generation PS2 = 2nd Generation (LS2-600H and PS2-1000H only)</p>	<p>5000H</p> <p><u>Capacity</u></p> <p>600H = 600 kg 1000H = 1,000 kg 2000H = 2,000 kg 4000H = 4,000 kg 5000H = 5,000 kg 10000H = 10,000 kg</p>	<p>75</p> <p><u>Motor displacement</u></p> <p>30 = 30 cm³ 40 = 40 cm³ 75 = 75 cm³</p>	<p>GC</p> <p><u>Drum</u></p> <p>No letter = standard GC = long drum</p>	<p>L</p> <p><u>Control</u></p> <p>L = Direct lever control DPXXM = Full flow remote control JCXXM = Remote pilot control, Joystick type <u>NOTE:</u> XXM = specify hose length needed in meter</p>	<p>GQZ</p> <p><u>Options and factory mounted accessories</u></p> <p>CM = Low Temp Design (-20°C) G = drum guard K = skid frame L = Automatic spooling device M = Material traceability certificate as per EN 10204 3.1 on main load bearing parts P = marine paint finish QZ = offshore paint incl. sandblasting R = press roller U = Emergency stop on "JC" Joystick Control station (On Heavy LS and PS only) W = Witness test. Specify W1 for ABS or W2 for DNV or W3 for LRS or W4 for Client witness of load test 16 = grooved drum for 16mm rope</p>
--	--	--	--	---	---



LS5000H-Sakhalin

Liftstar LS Series Hydraulic Winches

Dedicated Man Riding Model - 150 kg Load Capacity

Features

- Compact modular construction
- Design factor 10:1 on load bearing parts
- Hydraulic vane motor (all steel construction)
- High efficiency planetary gear box
- Internal automatic multi-disc brake
- External automatic band brake in stainless steel
- Dynamic lowering control by counter balance valve avoiding friction of brakes
- Overload protection device
- Main power emergency stop device
- Slack wire detector
- Top and bottom limit switches
- Assisting spooling device
- Stainless steel enclosure



Liftstar LS Series Hydraulic Winches

Dedicated Man Riding Model - 150 kg Load Capacity

Features

- Helical grooved drum
- Proportional local throttle control
- Emergency lifting and lowering device. Includes a 50 liter hydro-pneumatic accumulator (delivered separately).
- Marine paint 150 microns
- DNV and CE type approved
- Design temperature -20°C
- FEM classification 4m
- Very low noise level

Main Options

- Remote pendent control (joystick type)
- Offshore paint including sandblasting
- Third Party witness test



Liftstar LS Series Hydraulic Winches

Dedicated Man Riding Model - 150 kg Load Capacity

Technical Specifications

Model Number	Rated Capacity @ Top Layer	Rated pressure	Lifting speed @ rated load	Max. Oil Flow	Rope Diameter	Rated Rope Capacity	Max. Rope Storage Capacity	Weight Without Rope	Motor Type
	kg	bar	m/min.	l/min.	mm	m	m	kg	
LS2-150HLP	150	105	30	10	10	54	150	380	Vane





Liftstar LS Series Hydraulic Winches

Dedicated Man Riding Model - 150 kg Load Capacity

Model Driver (How to Order)

Model	Control Type	Drum	Personnel rating lbs (kg)
Vertical rope entry: (std configuration for most drilling floors)			
LS2-150HLP-L-E	throttle lever	grooved	330 (150)
LS2-150HLP-JC3M-E	Joystick control (with 3 meter control length)	grooved	330 (150)
Options			Option Code
- Material traceability certificate as per EN 10204 3.1 on main load bearing parts			M
- DNV Certification (Built under DNV survey)			N5*
- ABS Certification			N4*
- Offshore paint incl. Sandblasting and carbozinc primer			QZ
- Witness test by Third Party**			W**
*Option code N5 includes options "M" and "W"			
**Specify W1 for ABS or W2 for DNV or W3 for LRS or W4 for Client witness of load test			

Liftchain Series Hydraulic Chain Hoists

6 - 100 ton Load Capacity

The Liftchain LC2H hydraulic chain hoist series is the result of a long experience in heavy load lifting applications in most difficult and extreme environments around the world. Setting new standards for safety and reliability, the LC2H Series is particularly suited for tough applications on offshore and onshore drilling rigs.



Liftchain Series Hydraulic Chain Hoists

6 - 100 ton Load Capacity

Various Hook or Trolley Mount Configurations



Hook-Mount
Configuration



Standard
Trolley-Mount
Configuration



Low-Headroom
Configuration
(from 6 to 25 ton)

Liftchain Series Hydraulic Chain Hoists

6 - 100 ton Load Capacity

Controls

Control systems, hoses and fittings are delivered as separate accessories. The LCH Series can be provided with control systems such as:

- Hydraulic control console for hoist only, hoist/trolley combination, or for complete lifting system (e.g. systems with 2 or 4 hoist/trolley combination).
- Electro-hydraulic control console, also available for all types of configurations
- Hydraulic pendent control from 6 ton models with motorised trolley.

All these control systems can be delivered with emergency stop device on request.



◀ Hydraulic control console allowing the control of 4 hoist/trolley combinations

◀ Hydraulic pendent for hoist / trolley combination



Liftchain Series Hydraulic Chain Hoists

6 - 100 ton Load Capacity

Features

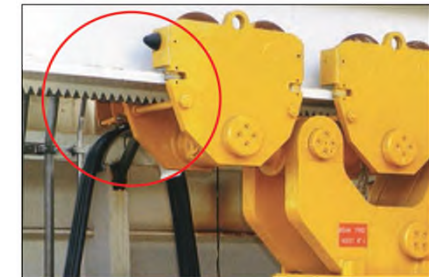
- Rugged and compact design with all steel construction for better durability
- Particularly adapted for difficult environment – Insensitive to dust and humidity.
- Design temperature: LC2H060S-250Q = -20°C. All other units = -10°C
- Suitable for hazardous explosion proof environments such as in Zone 2 as per ATEX directive 94/9/EC.
- Virtually maintenance free and reduced downtimes
- Automatic multi disc brake, fully enclosed for better protection and corrosion resistance. Maintenance free, no adjustment required.
- Corrosion resistant calibrated load chain for longer life – 5:1 design factor
- Integrated overload protection device prevents high force being applied to the hoist and to customer support structure
- Integrated top and bottom limit switches. No adjustment required
- Very low noise level (much quieter than pneumatic units)
- Low energy cost
- Meets worldwide standards

Liftchain Series Hydraulic Chain Hoists

6 - 100 ton Load Capacity

Main Options

- Chain buckets of different capacities (canvas or zinc plated steel)
- Rack & pinion drive configuration. Positive drive avoiding the trolley hoist from sliding onto the beam in case of beam inclination (Floating installations).
- Spark resistant option use in potential explosive areas classified as ATEX Zone 1
 - Solid bronze wheels
 - Pinion drive in solid bronze or stainless steel
 - Bronze coated bottom hook assembly
- Marine paint 150 microns
- Offshore 290 microns (including sandblasting)
- **NEW !** Emergency lowering device (on 6 to 25 ton 4 falls models). *Option code to be created*



Liftchain Series Hydraulic Chain Hoists

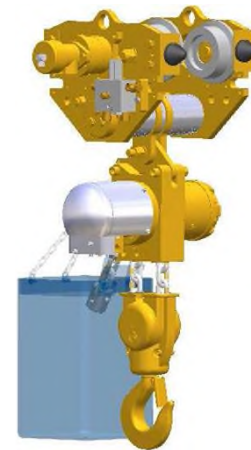
6 - 100 ton Load Capacity



Hook Mount Specifications

Model Number	Rated Capacity	Falls of load chain	Lifting speed @ rated load	Rated pressure	Max. nominal flow	Chain Size	Hook mount headroom	Weight with 3 m std lift	Chain weight per 1m extra lift	Motor Type
	ton		m/min.	bar	l/min.	mm	mm	kg	kg	
LC2H060S	6	1	3,7	125	40	16x45	717	125	5,75	Orbital
LC2H0120D	12	2	1,9	125	40	16x45	945	170	11,5	Orbital
LC2H125S	12,5	1	4,5	165	50	22x66			10,7	Piston
LC2H180T	18	3	1,25	145	40	16x45	1063	277	17	Orbital
LC2H250Q	25	4	0,95	145	40	16x45	1156	325	23	Orbital
LC2H250D	25	2	2,3	170	50	22x66	1231	490	21,4	Piston
LC2H375T	37,5	3	1,5	180	50	22x66	1185		32,4	Piston
LC2H500Q	50	4	1,1	185	50	22x66	1232		42,8	Piston
LCH750T	75	3	0,48	150	40	32x90	2345		73,5	Piston
LCH1000Q	100	4	0,40	150	40	32x90	2455		98	Piston

Note: There is no hydraulic version of the 1.5, 3 and 6 ton 4 falls models



Liftchain Series Hydraulic Chain Hoists

6 - 100 ton Load Capacity

Trolley Mount Specifications

Model Number	Rated Capacity	Traversing speed @ rated load (1)	Trolley max. nominal flow	Trolley flange adjustment	Maximum trolley flange thickness	Minimum headroom	Minimum curve radius (2)	Weight with 3 m std lift	Chain weight per 1m extra lift	Motor Type
	ton	m/min.	l/min.	mm	mm	mm	(m)	kg	kg	
LC2H060S	6	12	10	100-310	40	730	3	250	5,75	Orbital
LC2H0120D	12	12	10	130-310	40	995	3	335	11,5	Orbital
LC2H125S	12,5	15	10	160-310	40				10,7	Orbital
LC2H180T	18	12	10	160-310	40	1195	3	655	17	Orbital
LC2H250Q	25	12	10	160-310	40	1240	3	700	23	Orbital
LC2H250D	25	15	10	160-310	40	990	90	930	21,4	Orbital
LC2H375T	37,5	15	10	160-310	40	1134	90	1580	32,4	Orbital
LC2H500Q	50	15	10	160-310	40	1182	90	1730	42,8	Orbital
LCH750T	75	10	20	300-310	40	1635		6000	73,5	Orbital
LCH1000Q	100	10	20	285-310	51	1900		6000	98	Orbital

(1) In Rack & Pinion configuration, the traversing speed is reduced to 10 m/min. or oil flow is increased to 30l/min.

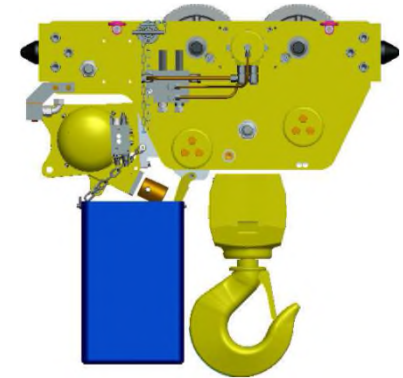
(2) not valid for low headroom version

Note: There is no hydraulic version of the 1.5, 3 and 6 ton 4 falls models

Liftchain Series Hydraulic Chain Hoists

6 - 100 ton Load Capacity

Low Headroom Trolley Specifications



TID-Extra
Industrial Technologies d.o.o.

Model	Rated Capacity	Traversing speed @ rated load (1)	Trolley max. nominal flow	Trolley flange adjustment	Maximum trolley flange thickness	Minimum headroom	Minimum curve radius (2)	Weight with 3 m std lift	Chain weight per 1m extra lift
	ton	m/min.	l/min.	mm	mm	mm	(m)	kg	kg
H060S	6	12	10	170-310	40	475	10	500	5,75
H0120D	12	12	10	170-310	40	670	10	540	11,5
LC2H180T	18	12	10	200-310	40	730	10	690	17
LC2H250Q	25	12	10	170-310	40	775	10	740	23

(1) In Rack & Pinion configuration, the traversing speed is reduced to 10 m/min. or oil flow is increased to 30l/min.

(2) not valid for standard trolley mount version

Note: Low Headroom versions exist only in 4 capacities (6; 12; 18 and 25 ton)

Liftchain Series Hydraulic Chain Hoists

Model Driver (How To Order)

6 to 25 ton Capacity

Series	Load capacity	Range	Control	Suspension	Lift & Control	Options
LC2H LIFTCHAIN SERIES, 2nd Generation	060S 6t, single fall 120D 12t, double falls 180t 18t, triple falls 250Q 25t, quadruple falls	I Standard Industrial	FO Full Flow ² (no control valve) P3 Joystick control (for hoist with motorised trolley)	A Fixed lug C Swivel top hook PU Plain rigid universal trolley (flat or tapered beam) 6 ton only PE Plain rigid trolley (flat beam) 12 to 25 t. PN Plain rigid trolley (tapered beam) 12 to 25 t. GU Geared rigid universal trolley (flat or tapered beam) 6 ton only GE Geared rigid trolley (flat beam) 12 t only. GN Geared rigid trolley (tapered beam) 12 t only. RU* motorised rigid universal trolley (flat or tapered beam) 6 ton only RE* motorised rigid trolley (flat beam) 12 to 25 t. RN* motorised rigid trolley (tapered beam) 12 to 25 t.	3M2 Standard: 3 m height of lift and 2 m of control XMx Specify heights in meters	A Standard chain bucket. B Large chain bucket. C Extra large chain bucket. D XXL chain bucket. LM Low temperature design (-20°C DNV). Includes 3.1 material traceability certificates. M Material traceability certificate as per EN 10204 3.1 on main load bearing part. P Marine paint 150µ. QZ Offshore paint 290µ including sandblasting. T1 Spark resistance ⁽²⁾ package (ATEX zone 1) W Witness test. Specify W1 for ABS or W2 for DNV or W3 for LRS or W4 for client witness of load test. U Emergency stop on "JC" joystick control station

(1) For protection during shipment and due to the wide range of installation variables, the airline accessories are shipped loose for client installation.

(2) Option T1 includes the following:

For the hoist: Cast iron pendent and bronze coated bottom hook assembly

For the trolley: Solid bronze wheels (all trolleys).

In addition for motorised trolleys, pinion drive in solid bronze or stainless steel and cast iron pendent.

In addition for geared trolleys, bronze coated hand wheel with brass hand chain guide.

* Add the letter "L" for low headroom trolley (e.g. LVU or LRU)

* Add the letter "R" for rack & pinion configuration (e.g. RER).

Liftchain Series Hydraulic Chain Hoists

Model Driver (How To Order)

12,5 to 100 ton Capacity

TiD-extra
Industrial Technologies d.o.o.

Series	Load capacity	Control	Suspension	Lift & control	Options
LCH LIFTCHAIN SERIES from 2.5 to 50 t. LCH LIFTCHAIN SERIES 75 and 100 t.	125SI 12.5 t, single fall 250DI 25 t, double falls 37.5TI 37.5 t, triple falls 500QI 50 t, quadruple falls 750TI 75 t, triple falls 1000QI 100 t, quadruple falls	FO Full Flow (no control valve) P3 Joystick control (for hoist with motorised trolley)	C Hook-mo RN* Motorised (gear motor) + braked trolley for tapered beam (all r... RE* Motorised (gear motor) + braked trolley for flat beam (all models). * Add the letter "R" for rack & pinion configuration (e.g. RER).	3M2 Standard: 3 m height of lift and 2 m of control XMx Specify heights in meters	A Standard chain bucket. B Large chain bucket. LM Low temperature design (-20°C DNV). Includes 3.1 material traceability certificates. M Material traceability certificate as per EN 10204 3.1 on main load bearing part. P Marine paint 150µ. QZ Offshore paint 290µ including sandblasting. T1 Spark resistance (2) package (ATEX zone 1). W Witness test. Specify W1 for ABS or W2 for DNV or W3 for LRS or W4 for client witness of load test. U Emergency stop on "JC" joystick control station

BOP Handling Hydraulic Systems

Capacity 20 to 200 ton

For over 30 years Ingersoll Rand has designed, manufactured and serviced hundreds of blowout preventer handling systems for all the major drilling contractors and oil companies in the industry.

Our experience with this complex and critical lifting application enables us to provide the type of equipment, engineering support, and certifications that these projects require.

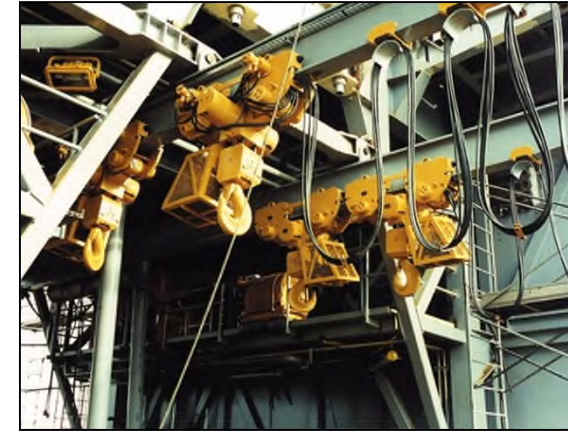


BOP Handling Hydraulic Systems

Capacity 20 to 200 ton

- Each BOP handling hydraulic system consists of a pair of trolley-mount hoists with standardised enhanced safety features incorporated in the system.
- The total system capacity corresponds to the addition of the rated capacity of both hoists

Note: Standard LC2H Hoists purchased for B.O.P. Handling Systems will void the warranty. They are not designed for this type of application (No trolley articulation).



BOP Handling Hydraulic Systems

Capacity 20 to 200 ton

Various System Configurations



BS Series Standard
Trolley-Mount
Configuration



LBS Series Low-Headroom
Configuration
(from 24 to 50 ton)



ULBS Series Ultra Low-
Headroom Configuration
(from 50 to 200 ton)

BS Series BOP Handling Hydraulic Systems

Specifications

BS Hoist Specifications

Model Number	System Capacity ton	Falls of chain per hoist	Nominal working pressure bar	Maximum oil flow l/min.	Hoisting speed m/min.	Minimum headroom mm	Chain size mm	Chain weight per 1m extra lift per hoist kg	Motor Type
BS25LC2H2	25	2	130	40	1,9	1125	16 x 45	11,4	Orbital
BS30LC2H3	30	3	140	40	1,25	1195	16 x 45	17,1	Orbital
BS36LC2H3	36	3	145	40	1,25	1195	16 x 45	17,1	Orbital
BS40LC2H4	40	4	145	40	0,95	1260	16 x 45	23	Orbital
BS50LC2H4	50	4	145	40	0,95	1260	16 x 45	23	Orbital
BS50LC2H2	50	2	170	50	2,3	1045	22 x 66	21,4	Piston
BS75LC2H3	75	3	175	50	1,35	1185	22 x 66	32	Piston
BS100LC2H4	100	4	185	50	1,1	1232	22 x 66	43	Piston
BS150LCH3	150	3	150	40	0,48	1845	32 x 90	73,5	Piston
BS200LCH4	200	4	150	40	0,25	1900	32 x 90	98	Piston



BS Trolley Specifications

Model Number	Number of wheels per trolley hoist	Traversing speed @ rated load (1) m/min.	Trolley max. nominal flow l/min.	Trolley flange adjustment mm	Maximum trolley flange thickness mm	Minimum beam curve radius m	Motor Type	Weight of the system with 9 m std lift (no control) kg
BS25LC2H2	4	12	10	130-310	40	3	Orbital	810
BS30LC2H3	4	12	10	160-310	40	3	Orbital	1510
BS36LC2H3	4	12	10	160-310	40	3	Orbital	1510
BS40LC2H4	4	12	10	160-310	40	3	Orbital	1680
BS50LC2H4	4	12	10	160-310	40	3	Orbital	1680
BS50LC2H2	8	15	10	160-310	40	90	Orbital	2120
BS75LC2H3	8	15	10	160-310	40	90	Orbital	3550
BS100LC2H4	8	15	10	160-310	40	90	Orbital	3980
BS150LCH3	16	10	20	300-310	40	130	Orbital	12000
BS200LCH4	16	10	20	285-310	40	130	Orbital	13000

(1) In Rack & Pinion configuration, the traversing speed is reduced to 10 m/min. or oil flow is increased to 30l/min.

BS Series BOP Handling Hydraulic Systems

Standard Features

- Articulated trolley hoist allows limited side pulling operations.
- Corrosion resistant load chain with 9 m height of lift as standard.
- Overload protection (integrated)
- Limit switch for upper and lower over-travel protection.
- Corrosion resistant Marine 812 finish paint.
- Galvanised steel chain container.
- Trolley guide rollers, rubber bumpers and rail sweeps.



LBS Series BOP Handling Hydraulic Systems

“Low Headroom” Versions

Several BOP handling systems are available in Low Headroom version for applications requiring a limited working height Range of capacities from 24 to 50 tons.



LBS Hoist Specifications

Model Number	System Capacity	Falls of chain per hoist	Nominal working pressure	Maximum oil flow	Hoisting speed	Minimum headroom	Chain size	Chain weight per 1m extra lift per hoist	Motor Type
	ton		bar	l/min.	m/min.	mm	mm	kg	
LBS24LC2H2	24	2	130	48	2,8	670	16 x 45	11,4	Orbital
LBS36LC2H3	36	3	150	48	1,85	730	16 x 45	17	Orbital
LBS50LC2H4	50	4	150	48	1,4	775	16 x 45	23	Orbital

LBS Trolley Specifications

Model Number	Number of wheels per trolley	Traversing speed @ rated load (1)	Trolley max. nominal flow	Trolley flange adjustment	Maximum trolley flange thickness	Minimum beam curve radius	Motor Type	Weight of the system with 9 m std lift
		m/min.	l/min.	mm	mm	m		kg
LBS24LC2H2	4 + 2	12	10	170-310	40	10	Orbital	1220
LBS36LC2H3	4 + 2	12	10	200-310	40	10	Orbital	1600
LBS50LC2H4	4 + 2	12	10	170-310	40	10	Orbital	1760

(1) In Rack & Pinion configuration, the traversing speed is reduced to 10 m/min. or oil flow is increased to 30l/min.

Note: the design of the LBS Series does not allow to get an articulated connection between the trolley and hoist.

ULBS Series BOP Handling Hydraulic Systems

“Ultra-Low Headroom” Versions

Several BOP handling systems are available in ultra-low headroom version for applications requiring a very limited working height. Range of capacities from 50 to 200 tons.

The minimum headroom of these products is only slightly greater than the size of the bottom hook assembly !



Model number	System capacity (t)	Falls of chain per hoist	Min. headroom (mm)	Lifting speed at rated load (m/min)	Lowering speed at rated load (m/min)		Travelling speed at rated load (m/min)		Trolley flange adjustment (mm)
ULBS Series - Ultra-Low Headroom BOP Handling systems									
ULBS50LC2H2...	50	2	—	Consult us			Consult us		—
ULBS100LC2H4...	100	4	545	1.40	1.65	20	12	3.8	270-310
ULBS150LC2H6...	150	6	733	Consult us			Consult us		270-310
ULBS200LC2H8...	200	8	—	Consult us			Consult us		—

Note: the design of the ULBS Series does not allow to get an articulated connection between the trolley and hoist.

BOP Handling Hydraulic Systems

Options

- Variable lengths of lift and pendent control hose.
- Rack and pinion trolley drive for positive traction.
- Clevis and shackle attachment in lieu of bottom hook.
- Corrosion resistant Marine 812-X paint system (with sandblast and carbo-zinc)
- Low temperature design TD -20°C (including material traceability certificates)
- Spark resistant package, option T1, for applications in zone 1 as per ATEX 94/9/CE Directive. It includes as standard:
 - **On the trolleys**, solid bronze wheels and pinion drive in solid bronze or stainless steel. Stainless steel pins and fasteners (10 mm and smaller) and 20µ zinc plated fasteners (11 mm and larger).
 - **On the hoists**, bronze coated bottom hook assembly . Stainless steel pins and fasteners (10 mm and smaller) and 20µ zinc plated fasteners (11 mm and larger).
- **NEW!** Emergency lowering device (on BS25 to BS50 4 falls models). *Option code to be created*



BOP Handling Hydraulic Systems

Model Driver (How To Order)

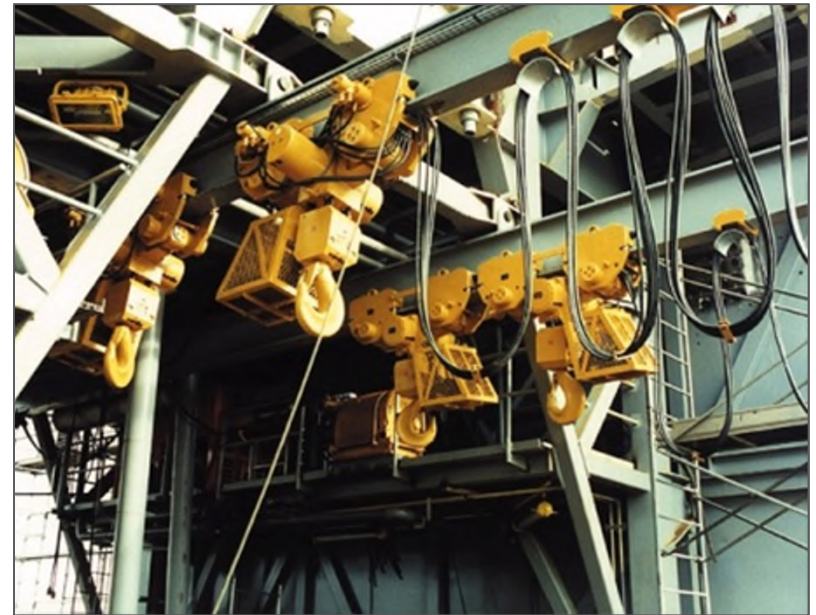
To order your BOP handling system, specify complete model number code as shown below. Also specify beam size, type and flange width.

Series / Load capacity		Chain falls	Control	Beam type	Lift & control	Options
BS25LC2H	2 x 12.5 t	2	P3 Joystick Control For hoist + trolley	E Flat beam* N Tapered beam*	9M9 Standard: 9 m height of lift and 9 m of control	LM Low temperature design (TD = -20°C). Includes 3.1 material traceability certificates.
BS30LC2H	2 x 15 t	2				
BS36LC2H	2 x 18 t	3	FO Full Flow (no control valve)	* Add the letter "R" for Rack & Pinion configuration (e.g. ER)	9 m of control	M 3.1 material traceability certificates ⁽¹⁾
BS40LC2H	2 x 20 t					3 falls per hoist (available for 30, 36, 75 and 150 t models)
BS50LC2H	2 x 25 t	4			Specify heights in meters	N Clevis instead of bottom hook
BS75LC2H	2 x 37.5 t					4 falls per hoist (available for 40, 50, 100 and 200 t models)
BS100LC2H	2 x 50 t	6				QZ Offshore paint including sandblast
BS150LCH	2 x 75 t					6 falls per hoist for ULBS 150
BS200LCH	2 x 100 t	8				T1 Spark resistant package for zone 1 (see details on previous page)
Note: Same model driver applies to LBS and ULBS Series		8				W1 ABS witness test
						W2 DNV witness test
						W3 LRS witness test
						W4 Client witness of load test
						-E Compliance with the European machinery directive.

(1) Material traceability certificates according to EN 10204 (Ex DIN 50049) 3.1 on load bearing parts.

BOP Handing Systems

Examples of Applications



Hydraulic Winches & Hoists For the Oil & Gas Industry

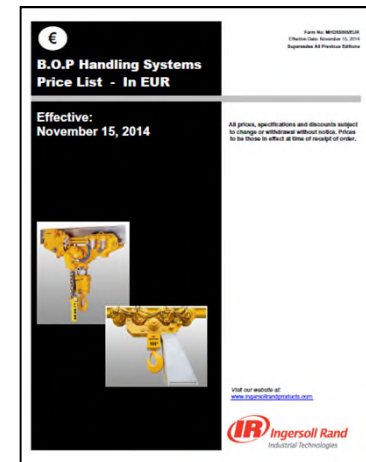
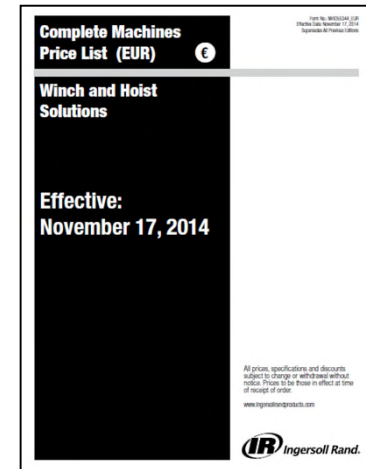
List Prices

A) Prices for Douai hydraulic winches and hoists are available from the current W&H price list.

- Winches:
 - LS portable series Page25
 - LS heavy series Page 26
 - LS2-150HLP Man Rider series Page 28
- Hoists
 - LC2H series from 6 to 25 ton From page 56
 - LC2H series from 25 to 50 ton From page 59
 - LCH from 75 to 100 ton From page 62

B) Prices for Douai hydraulic BOP systems are available from the current BOP handling Systems price list

- BS series hydraulic systems From page 6



Hydraulic Winches & Hoists For the Oil & Gas Industry

Technical Fliers

Several technical fliers for Douai hydraulic winches and hoists (non all configurations) are available from the ITS EMEIA Sales Library. In the event you need a specific one, please contact Technical Sales. We will then check with our Engineering Department.

IR Ingersoll Rand **HYDRAULIC WINCH** Model LS2-600W4-L
Capacity 600kg

Technical Specifications:

Parameter	Value
Capacity	600 kg
Drum diameter	150 mm
Drum length	150 mm
Reel diameter	150 mm
Reel length	150 mm
Reel turns	150
Reel speed	150 rpm
Reel torque	150 Nm
Reel power	150 kW
Reel voltage	150 V
Reel current	150 A
Reel frequency	150 Hz
Reel phase	150 °
Reel temperature	150 °C
Reel humidity	150 %
Reel pressure	150 bar
Reel flow	150 l/min
Reel efficiency	150 %
Reel life	150,000 h
Reel warranty	150 months

IR Ingersoll Rand **HYDRAULIC LIFTING WINCH** Model LS5000H75-L
Capacity 5000kg

Technical Specifications:

Parameter	Value
Capacity	5000 kg
Drum diameter	300 mm
Drum length	300 mm
Reel diameter	300 mm
Reel length	300 mm
Reel turns	300
Reel speed	300 rpm
Reel torque	300 Nm
Reel power	300 kW
Reel voltage	300 V
Reel current	300 A
Reel frequency	300 Hz
Reel phase	300 °
Reel temperature	300 °C
Reel humidity	300 %
Reel pressure	300 bar
Reel flow	300 l/min
Reel efficiency	300 %
Reel life	300,000 h
Reel warranty	300 months

IR Ingersoll Rand **LS2-150HL-L-E HYDRAULIC MAN-RIDING WINCH** Capacity 150kg

Technical Specifications:

Parameter	Value
Capacity	150 kg
Drum diameter	150 mm
Drum length	150 mm
Reel diameter	150 mm
Reel length	150 mm
Reel turns	150
Reel speed	150 rpm
Reel torque	150 Nm
Reel power	150 kW
Reel voltage	150 V
Reel current	150 A
Reel frequency	150 Hz
Reel phase	150 °
Reel temperature	150 °C
Reel humidity	150 %
Reel pressure	150 bar
Reel flow	150 l/min
Reel efficiency	150 %
Reel life	150,000 h
Reel warranty	150 months

IR Ingersoll Rand **LIFTCHAIN LC2H Series Model LC2H060S...** Hook Mount, 6 ton Lifting capacity

Technical Specifications:

Parameter	Value
Capacity	6000 kg
Drum diameter	600 mm
Drum length	600 mm
Reel diameter	600 mm
Reel length	600 mm
Reel turns	600
Reel speed	600 rpm
Reel torque	600 Nm
Reel power	600 kW
Reel voltage	600 V
Reel current	600 A
Reel frequency	600 Hz
Reel phase	600 °
Reel temperature	600 °C
Reel humidity	600 %
Reel pressure	600 bar
Reel flow	600 l/min
Reel efficiency	600 %
Reel life	600,000 h
Reel warranty	600 months

IR Ingersoll Rand **LIFTCHAIN LC2H Series Model LC2H180T...** Trolley Mount, 18 ton Lifting capacity

Technical Specifications:

Parameter	Value
Capacity	18000 kg
Drum diameter	1800 mm
Drum length	1800 mm
Reel diameter	1800 mm
Reel length	1800 mm
Reel turns	1800
Reel speed	1800 rpm
Reel torque	1800 Nm
Reel power	1800 kW
Reel voltage	1800 V
Reel current	1800 A
Reel frequency	1800 Hz
Reel phase	1800 °
Reel temperature	1800 °C
Reel humidity	1800 %
Reel pressure	1800 bar
Reel flow	1800 l/min
Reel efficiency	1800 %
Reel life	1800,000 h
Reel warranty	1800 months

IR Ingersoll Rand **LIFTCHAIN LC2H Series LOW HEADROOM HYDRAULIC CHAIN HOIST Model LC2H2500FOLREIN...** 25ton lifting capacity

Technical Specifications:

Parameter	Value
Capacity	25000 kg
Drum diameter	2500 mm
Drum length	2500 mm
Reel diameter	2500 mm
Reel length	2500 mm
Reel turns	2500
Reel speed	2500 rpm
Reel torque	2500 Nm
Reel power	2500 kW
Reel voltage	2500 V
Reel current	2500 A
Reel frequency	2500 Hz
Reel phase	2500 °
Reel temperature	2500 °C
Reel humidity	2500 %
Reel pressure	2500 bar
Reel flow	2500 l/min
Reel efficiency	2500 %
Reel life	2500,000 h
Reel warranty	2500 months

IR Ingersoll Rand **LIFTCHAIN LC2H Series HYDRAULIC CHAIN HOIST Model LC2H500FRL...** Trolley Mount, 50 Ton Lifting capacity

Technical Specifications:

Parameter	Value
Capacity	50000 kg
Drum diameter	5000 mm
Drum length	5000 mm
Reel diameter	5000 mm
Reel length	5000 mm
Reel turns	5000
Reel speed	5000 rpm
Reel torque	5000 Nm
Reel power	5000 kW
Reel voltage	5000 V
Reel current	5000 A
Reel frequency	5000 Hz
Reel phase	5000 °
Reel temperature	5000 °C
Reel humidity	5000 %
Reel pressure	5000 bar
Reel flow	5000 l/min
Reel efficiency	5000 %
Reel life	5000,000 h
Reel warranty	5000 months

IR Ingersoll Rand **Hydraulic B.O.P. HANDLING SYSTEM Model BSA4, LC2H4P2500S...** 2.5 Ton Tank Capacity

Technical Specifications:

Parameter	Value
Capacity	2500 kg
Drum diameter	250 mm
Drum length	250 mm
Reel diameter	250 mm
Reel length	250 mm
Reel turns	250
Reel speed	250 rpm
Reel torque	250 Nm
Reel power	250 kW
Reel voltage	250 V
Reel current	250 A
Reel frequency	250 Hz
Reel phase	250 °
Reel temperature	250 °C
Reel humidity	250 %
Reel pressure	250 bar
Reel flow	250 l/min
Reel efficiency	250 %
Reel life	250,000 h
Reel warranty	250 months

IR Ingersoll Rand **B.O.P. AIR HOIST HANDLING SYSTEM Model BSA4, LC2H4P2500S...** SYSTEM CAPACITY 150 tons

Technical Specifications:

Parameter	Value
Capacity	150000 kg
Drum diameter	15000 mm
Drum length	15000 mm
Reel diameter	15000 mm
Reel length	15000 mm
Reel turns	15000
Reel speed	15000 rpm
Reel torque	15000 Nm
Reel power	15000 kW
Reel voltage	15000 V
Reel current	15000 A
Reel frequency	15000 Hz
Reel phase	15000 °
Reel temperature	15000 °C
Reel humidity	15000 %
Reel pressure	15000 bar
Reel flow	15000 l/min
Reel efficiency	15000 %
Reel life	15000,000 h
Reel warranty	15000 months

Hydraulic Winches & Hoists For the Oil & Gas Industry

Lead Times

Lead times for Douai hydraulic winches and hoists are listed in the lead time sheets published weekly in EMEA.

In the event you need a specific configuration, please contact Technical Sales. We will then check with the Planning Department.

Douai Products (P/C 403) Average Lead Times - Ex Douai France Factory													
(1) NOTE : Add the longest option lead time adder to the base lead time to determine the lead time for complete machines with options													
(2) Note that option "W" will always extend the total LT by 1 week													
For any other option not listed below, please consult us.													
HOISTS	BASE LEAD TIME (Weeks)					OPTION ADDER LEAD TIME (1)						Witness Test Option W (1)	
	AIR		HYDRAULIC			QZ Paint	T1 Spark Resistance package	LM Low Temp	RACK & PINION	RACK & PINION + T1 option	Witness Test Option W (1)		
	HOOK MOUNT	STD or LH TROLLEY MOUNT	HOOK MOUNT MINING (SMP/DMP)	HOOK MOUNT	STD or LH TROLLEY MOUNT								
LC2A015S / 030D	17	17	19	N/A	N/A	1	1	0	3	3	1		
LC2A040S/080D	9	9	11	N/A	N/A	1	1	0	3	3	1		
LC2A(H)060S/120D	16	16	18	16	16	1	1	0	3	3	1		
LC2A060Q	17	17	N/A	N/A	N/A	1	1	0	3	3	1		
LC2A(H)180T/250Q	17	17	N/A	N/A	N/A	1	1	0	3	3	1		
LC2A(H)125S/500Q	23	23	N/A	23	23	1	1	0	3	3	1		
LC2A(H)750T/1000Q	18	18	N/A	18	18	1	1	0	3	3	1		
BOP Systems :													
BS26LC2	N/A	16	N/A	N/A	16	1	1	0	3	3	1		
BS30LC3-50LC4	N/A	17	N/A	N/A	17	1	1	0	3	3	1		
BS50LC2-100LC4	N/A	23	N/A	N/A	23	1	1	0	3	3	1		
BS150LC3-200LC4	N/A	18	N/A	N/A	18	1	1	0	3	3	1		
ULBS150-LC2-200LC8	N/A	18	N/A	N/A	18	1	1	0	3	3	1		
WINCHES	BASE LEAD TIME (Weeks)					OPTION ADDER LEAD TIME (1)						Witness Test Option W (1)	
	AIR		HYDRAULIC			QZ	CM Low Temp	Drum grooving	K Skid Frame	FK Drum auto brake and skid frame	FF Both auto disc and auto drum brakes and skid		Witness Test Option W (1)
	HOOK MOUNT	STD or LH TROLLEY MOUNT	HOOK MOUNT MINING (SMP/DMP)	HOOK MOUNT	STD or LH TROLLEY MOUNT								
LS2-300 / LS2-600 / PS2-1000	13	13	N/A	13	13	1	1	0	N/A	N/A	1		
LS1500 / PS2400	21	21	N/A	21	21	1	1	0	N/A	N/A	1		
LS2000/PS4000	13	13	1	13	13	1	1	0	On request	On request	N/A		
LS5000/PS10000	13	13	1	13	13	1	1	0	On request	On request	N/A		
LS2-150 manidur	15	15	1	15	15	1	1	0	Incl.	Incl.	1		

IR Ingersoll Rand Manufacturing Lead Times & In Stock List Winch & Hoist EMEA													
PLEASE NOTE : This is an estimate for most standard Product Configurations up to 3 units only from receipt of clean order to the factory (No credit Hold) - Schedule Ship Dates are confirmed within 48 hours from order entry.													
Lead Times also depend on forecast versus orders received, validate LT with your customer service contact before committing an order.													
From the week of 4 Feb. to 28 Feb. 2024 - Week 4 of 2024													
Douai Products (PIC 403) Average Lead Times - Ex Douai France Factory													
(1) NOTE : Add the longest option lead time adder to the base lead time to determine the lead time for complete machines with options													
(2) Note that option "W" will always extend the total LT by 1 week													
For any other option not listed below, please consult us.													
HOISTS	BASE LEAD TIME (Weeks)					OPTION ADDER LEAD TIME (1)						Witness Test Option W (1)	
	AIR		HYDRAULIC			QZ Paint	T1 Spark Resistance package	LM Low Temp	RACK & PINION	RACK & PINION + T1 option	Witness Test Option W (1)		
	HOOK MOUNT	STD or LH TROLLEY MOUNT	HOOK MOUNT MINING (SMP/DMP)	HOOK MOUNT	STD or LH TROLLEY MOUNT								
LC2A015S / 030D	17	17	19	N/A	N/A	1	1	0	3	3	1		
LC2A040S/080D	9	9	11	N/A	N/A	1	1	0	3	3	1		
LC2A(H)060S/120D	16	16	18	16	16	1	1	0	3	3	1		
LC2A060Q	17	17	N/A	N/A	N/A	1	1	0	3	3	1		
LC2A(H)180T/250Q	17	17	N/A	N/A	N/A	1	1	0	3	3	1		
LC2A(H)125S/500Q	23	23	N/A	23	23	1	1	0	3	3	1		
LC2A(H)750T/1000Q	18	18	N/A	18	18	1	1	0	3	3	1		
BOP Systems :													
BS26LC2	N/A	16	N/A	N/A	16	1	1	0	3	3	1		
BS30LC3-50LC4	N/A	17	N/A	N/A	17	1	1	0	3	3	1		
BS50LC2-100LC4	N/A	23	N/A	N/A	23	1	1	0	3	3	1		
BS150LC3-200LC4	N/A	18	N/A	N/A	18	1	1	0	3	3	1		
ULBS150-LC2-200LC8	N/A	18	N/A	N/A	18	1	1	0	3	3	1		
WINCHES	BASE LEAD TIME (Weeks)					OPTION ADDER LEAD TIME (1)						Witness Test Option W (1)	
	AIR		HYDRAULIC			QZ	CM Low Temp	Drum grooving	K Skid Frame	FK Drum auto brake and skid frame	FF Both auto disc and auto drum brakes and skid		Witness Test Option W (1)
	HOOK MOUNT	STD or LH TROLLEY MOUNT	HOOK MOUNT MINING (SMP/DMP)	HOOK MOUNT	STD or LH TROLLEY MOUNT								
LS2-300 / LS2-600 / PS2-1000	13	13	N/A	13	13	1	1	0	N/A	N/A	1		
LS1500 / PS2400	21	21	N/A	21	21	1	1	0	N/A	N/A	1		
LS2000/PS4000	13	13	1	13	13	1	1	0	On request	On request	N/A		
LS5000/PS10000	13	13	1	13	13	1	1	0	On request	On request	N/A		
LS2-150 manidur	15	15	1	15	15	1	1	0	Incl.	Incl.	1		
Kent Products (PIC 405) Average Lead Times - Ex Kent US Factory													
(1) NOTE : Add the longest option lead time adder to the base lead time to determine the lead time for complete machines with options													
For any other option not listed below, please consult us.													
AIR WINCHES	BASE LEAD TIME (Weeks)					OPTION ADDER LEAD TIME (1)						Witness Test Option W (1)	
	AIR		HYDRAULIC			QZ	CM Low Temp	Drum grooving	K Skid Frame	FK Drum auto brake and skid frame	FF Both auto disc and auto drum brakes and skid		Witness Test Option W (1)
	HOOK MOUNT	STD or LH TROLLEY MOUNT	HOOK MOUNT MINING (SMP/DMP)	HOOK MOUNT	STD or LH TROLLEY MOUNT								
LS2-300 / LS2-600 / PS2-1000	13	13	N/A	13	13	1	1	0	N/A	N/A	1		
LS1500 / PS2400	21	21	N/A	21	21	1	1	0	N/A	N/A	1		
LS2000/PS4000	13	13	1	13	13	1	1	0	On request	On request	N/A		
LS5000/PS10000	13	13	1	13	13	1	1	0	On request	On request	N/A		
LS2-150 manidur	15	15	1	15	15	1	1	0	Incl.	Incl.	1		
IN STOCK LIST													
(Please note this stock is intended to support the EMEA (European Middle East & Africa) market ONLY. MODELS IN STOCK at the GENK warehouse in Belgium (BEG org in Oracle)													
The units listed below are stocked and shipped on a first come, first served basis.													
Contact headsets to contact your Local Customer Representative to get an accurate information on their availability													
Model	CPN	Qty Avail.	Qty on order for stock replenishment / Planned to be on stock on										
FAS-200X1-CE	45898574	4	2 pcs (April 2nd) - 7 pcs (April 9th)										
FAT0-200X1-CE	45898467	5											
LS2-150R/LP-E	38758849	0	5 pcs (April 14 th)										
For all technical enquiries, please contact the Douai Product Support Team													
Visit our website at: www.ingersollrandproduct.com													

Newly Developed Subsea Hydraulic Hoists

LC2H hydraulic chain hoists for Subsea applications



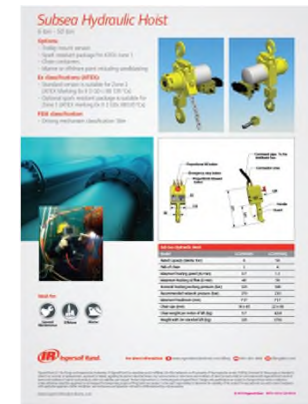
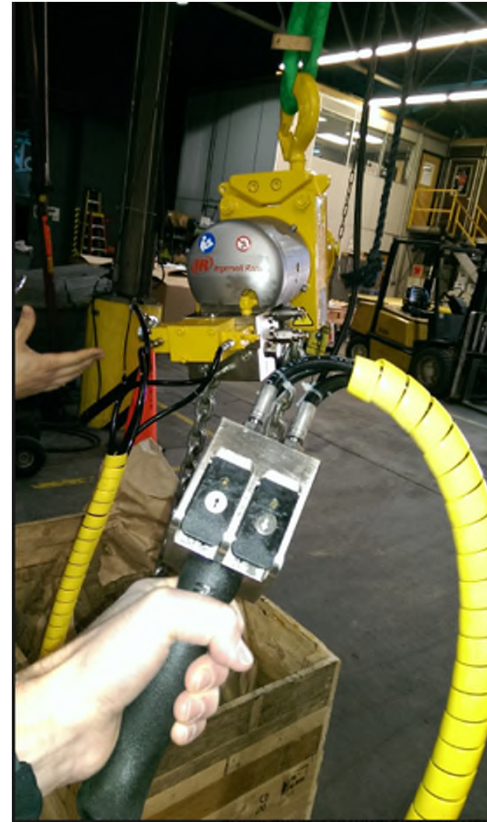
Alexis Flipo

To All Company, Herbich, Pascal, and Lefebvre, Jean Claude

Follow

Challenge succeeded in Douai. We've say Yes to a customer who wanted an hydraulic emergency lowering device, knowing that it had never been done by us. Started from zero and took the opportunity of a special order to generate fresh innovation For LC2H range. Characteristics of the Emergency lowering device:

- Fast lowering: 2meters/min for LC2H060S, 1meter/min for LC2H120D, 0,66meter/min for LC2H180T, 0,5meter/min for LC2H250Q.
- Fast activation. 2 valves to close, after having close the 2 valves V1&V2 and few seconds of pumping , the hoist will lower without other source of power.
- No need to adjust any valve on the hoist. Adjustments are sealed on factory by IREP.
- Compact design. All in 1 customized bloc. Just 1 additional line is required.
- Limited negative impact for the motor:
- Integrated limiter for oil regeneration. Prevent temperature increase in the motor.
- Integrated speed limiter. Prevent non controlled overspeed.



Other IR Winch & Hoist Products Available

Heavy Duty Air Chain Hoists:

- A comprehensive range of air chain hoists with piston or gear motor.
- Lifting capacities from 1.5 to 100 tons.



Pneumatic and Electric Winches:

- The broadest range of air winches in the world featuring both piston motor and lube free gear motor designs. Capacities up to 10 tons.
- Electric winches for lifting and pulling applications up to 20 tons.



Why Choosing IR Winch & Hoist Products?

- Designed for the most demanding applications
- Rugged, reliable, compact and offer excellent power-to-weight ratio
- Increased safety for the operator
- Reduced downtimes. Robust construction provides long-lasting use
- Easy to operate and maintain
- Every product is individually tested on test rigs and delivered with a manufacturer test certificate
- World-wide parts and service support



ingersollrandproducts.com