



BOP Handling Systems

20 to 200 metric tons Lifting Capacity



TiD-extra
Industrial Technologies d.o.o.

Winch and Hoist Solutions

Table of Contents

1. BOP Handling Systems – Overview	3
2. BOP Handling Systems – Selection Chart.....	4
3. Hercu-Link Air BOP Handling Systems (20 to 200 tons Capacity)	
❖ Standard Features and Options	5
❖ Specifications and Performance of Piston Motor Drive	6
❖ Model Driver.....	7
❖ Dimensions and Drawings	12-13
4. Liftchain BOP Handling Systems (25 to 200 tons Capacity)	
❖ Standard Features and Options	8
❖ Liftchain Air BOP Handling Systems	
▪ Specifications and Performance of Gear Motor Drive.....	9
▪ Model Driver	11
▪ Dimensions and Drawings	14-18
❖ Liftchain Hydraulic BOP Handling Systems	
▪ Specifications and Performance.....	10
▪ Model Driver	11
▪ Dimensions and Drawings	14-18
5. Engineered Solutions	
❖ BHS150M and BHS200M series	19
❖ ULBS100LCA4 series (Ultra-low headroom design).....	19
6. Contact Information	
❖ Worldwide Locations	20

BOP Handling Systems

OVERVIEW

For over 30 years Ingersoll Rand has designed, manufactured, and serviced hundreds of Blowout Preventer Handling Systems for all the major drilling contractors and oil companies in the industry.

Our familiarity with this complex and critical lifting application enables us to provide the type of equipment, engineering support, and certifications that these projects require.

The design of our BOP Handling Systems reflects the years of experience we've gained by providing equipment for the harshest environments and applications around the world. Our Oilfield Tough systems feature compact modular designs, robust "bulletproof" gearboxes, powerful air or hydraulic motors, large diameter load chain, and all steel/cast iron construction which provides increased safety, rugged reliability, enhanced control, and reduced maintenance.

Our commitment to safety and quality combined with our long experience with difficult lifting applications allows us to provide our clients with the safest and most cost-effective solutions possible.

The Ingersoll Rand Advantage

- ❖ **3rd Party approvals** by one or more regulatory bodies; the American Bureau of Shipping (ABS), Det Norske Veritas (DNV), Lloyds Register of Shipping (LRS), Norwegian Petroleum Directorate (NPD), European Machinery Directives (CE).



Certificate No. FM53539



Certificate No. QUAL/1991/309e

- ❖ **ISO 9001 certified manufacturing and service facilities**
- ❖ **5:1 design factor combined with all steel and cast iron construction** to withstand the brutal environmental and mechanical challenges of the job.
- ❖ **Automatic multi-disc oil bath motor brakes** that engage instantly the moment the controls are released.
- ❖ **High efficiency planetary gearboxes** that are fully sealed to exclude contaminants.
- ❖ **Space saving modular designs** require no deck space, offer low headroom and improved end approach. Ultra-low headroom models are available for applications with severe envelope restrictions.
- ❖ **Air and hydraulic powered models** to choose from, including high-torque radial piston and compact (lube-free) gear type air motors. Air motors provide built-in overload protection since they will stall without damaging hoist.
- ❖ **Smooth, precise, and safe load control** with variable speed pendant control.
- ❖ **Rugged corrosion resistant load chain** in 16, 22, and 32 mm sizes has greater elongation and therefore, is more resistant to shock loading. The large links provide for easier external inspection, excellent resistance to abrasion, and will last indefinitely when properly maintained.
- ❖ **True vertical lift** which enhances load control characteristics and safety.
- ❖ **Articulated trolleys** accommodate limited side pulling as BOP stack is being lifted.
- ❖ **Engineered options**
 - Rack and pinion trolley drive option for positive traction and improved horizontal load control.
 - Severe duty packages available for cold weather, marine, and explosion-proof environments including ATEX.
 - Remote control pendants and consoles.
 - Spark and corrosion resistant components.
 - Air and hydraulic festooning systems.
 - Trolleys for custom fabricated beams.
 - Clevis and shackle bottom block assemblies.
 - Low pressure 4 bar (57psi) applications.



BOP Handling Systems

SELECTION CHART

**Rated capacity (tons)	Model Number	Number of Chain Falls per hoist	Max. lifting speed m/min (ft/min)	Minimum Headroom mm (in.)
Hercu-Link Air BOP Handling Systems (Piston motor drive)				
20	BHS20M	2	1.5 (5)	813 (32)
30	BHS30M	3	1 (3.8)	895 (35.25)
40	BHS40M-4	4	0.8 (2.5)	903 (35.56)
	BHS40M-8	4	0.8 (2.5)	903 (35.56)
50	BHS50M	2	1.2 (4)	1040 (40.94)
75	BHS75M	3	0.8 (2.5)	1243 (48.94)
100	BHS100M	4	0.6 (2)	1346 (53)
150	BHS150M	3	0.7 (2.5)	–
200	BHS200M	4	0.6 (2)	–
Liftchain Air BOP Handling Systems (Gear motor drive)				
25	BS25LCA2P	2	0.8 (2.63)	1128 (44.41)
30	BS30LCA3P	3	0.6 (1.97)	1242 (48.9)
36	BS36LCA3P	3	0.5 (1.64)	1242 (48.9)
50	BS50LCA2P	2	1.6 (5.25)	976 (38.42)
	BS50LCA4P	4	0.4 (1.30)	1290 (50.79)
75	BS75LCA3P	3	1.1 (3.60)	1170 (46.06)
100	BS100LCA4P	4	0.8 (2.60)	1392 (54.8)
150	BS150LCA3P	3	0.4 (1.30)	1845 (72.64)
200	BS200LCA4P	4	0.3 (0.98)	1901 (74.84)
Liftchain Hydraulic BOP Handling Systems				
25	BS25LCH2P	2	2.8 (9.19)	1128 (44.41)
30	BS30LCH3P	3	1.9 (6.23)	1242 (48.9)
36	BS36LCH3P	3	1.86 (6.1)	1242 (48.9)
50	BS50LCH2P	2	2.27 (7.45)	976 (38.42)
	BS50LCH4P	4	1.35 (4.1)	1290 (50.79)
75	BS75LCH3P	3	1.51 (4.95)	1170 (46.06)
100	BS100LCH4P	4	1.13 (3.7)	1392 (54.8)
150	BS150LCH3P	3	0.48 (1.57)	1845 (72.64)
200	BS200LCH4P	4	0.36 (1.18)	1901 (74.84)

**All BOP Handling Systems are comprised of two trolley-mounted hoists; each of which is rated at one-half the complete system capacity.



Hercu-Link Air BOP Handling Systems

STANDARD FEATURES AND OPTIONS of Piston Motor Drive – 20 to 200 tons Lifting Capacity

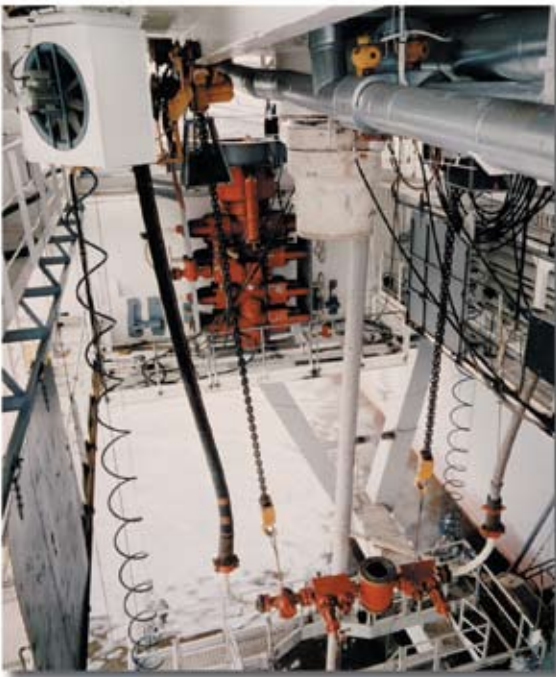
Designed to meet or exceed specifications of one or more of the following regulatory bodies – the Norwegian Petroleum Directorate (NPD), UK HSE, Lloyds Register of Shipping (LRS), Det Norske Veritas (DNV), and American Bureau of Shipping (ABS) for the oilwell drilling industry.

Standard Features

- Radial piston air motor – hoist and trolley
- 5:1 design factor
- All steel construction
- Automatic Fail- Safe, multi disc, motor brake on hoist
- Articulated trolley allows limited side pulling operations on 8-wheel trolley models
- Fully enclosed planetary gear box
- Compact modular design
- Corrosion resistant load chain
- 9m (30 ft) height of lift standard on all models
- Bottom block mounted on bearing with external lubrication point and water drain
- Accu-Trol™ pendent with “emergency stop/start” feature and 9m (30 ft) pendent hose
- Limit switch for upper and lower over-travel protection.
- Lifting lugs for easy installation
- Filter-Lubricator air preparation package mounted on unit
- Corrosion resistant Marine 812 finish paint
- Galvanized steel chain container
- Trolley guide rollers, rubber bumpers, and rail sweeps
- Manufacturer test certificate and maintenance manual
- Exhaust mufflers



BHS100M (100-ton system) in the process of deploying Blowout Preventer stack



BHS50M (50-ton system) after storage of Blowout Preventer for periodic maintenance.

Options

- Variable lengths of lift and pendent control hose
- Spark and corrosion resistant (S•COR•E) packages
- Rack and pinion trolley drive for positive traction
- Clevis and shackle attachment in lieu of bottom hook
- Air or hydraulic festooning systems
- Trolleys for shipyard fabricated beams
- CE compliant models including overload protection and main emergency stop device
- Corrosion resistant Marine 812-X paint system
- Sandblast and carbozinc (primer only)
- Custom paint coating systems per owners specifications
- Custom designed air control consoles
- 4 bar (57 psi) application models

Hercu-Link Air BOP Handling Systems

SPECIFICATIONS AND PERFORMANCE of Piston Motor Drive – 20 to 200 tons Lifting Capacity

Hoist Specifications																
Model No.	System capacity (tons)	Standard lift/ Pendent drop		Speed of hoist				Hoist motor		Air inlet NPT in.	Chain Size mm	Chain wt./lineal m (ft) of lift		Chain falls per hoist	Net weight of system	
		m	ft	m/min	fpm	lower m/min	fpm	hp	cfm			kg	lbs		kg	lbs
BHS20M	20	9	30	1.5	5	2.3	7.5	3.8	165	3/4	16 x 45	11	25	2	1183	2600
BHS30M	30	9	30	1	3.8	1.5	5	3.8	165	3/4	16 x 45	17	38	3	1706	3750
BHS40M-4	40	9	30	0.8	2.5	1.1	3.8	3.8	165	3/4	16 x 45	23	50	4	2230	4900
BHS40M-8	40	9	30	0.8	2.5	1.1	3.8	3.8	165	3/4	16 x 45	23	50	4	2662	5850
BHS50M	50	9	30	1.2	4	1.8	6	9.4	280	1"	22 x 66	21	47	2	2616	5750
BHS75M	75	9	30	0.8	2.5	1.1	3.8	9.4	280	1"	22 x 66	32	71	3	2844	6250
BHS100M	100	9	30	0.6	2	0.9	3	9.4	280	1"	22 x 66	43	94	4	4527	9950
BHS150M	150	9	30	0.7	2.5	-	-	25	700	1 1/2"	32 x 90	68	151	3	3526	7750
BHS200M	200	9	30	0.6	2	-	-	25	700	1 1/2"	32 x 90	91	201	4	5005	11000

Notes:
Air supply hose size must be a minimum 0.25 inch larger dia. than air inlet size.
Performance figures are at 7.3 bar (105 psi) air pressure.

Trolley Specifications													
Model No.	No. of pairs of wheels per beam	Flange adjustment		Wheel tread diameter		Wheel loading per pair		Min. inside curve radius		Trolley motor		Speed of Trolley	
		mm	in.	mm	in.	kg	lbs	mm	in.	hp	cfm	m/min	fpm
BHS20M	2	152-203	6-8	175	6.13	5310	11670	1524 ⁽¹⁾	60 ⁽¹⁾	1.6	65	0-12	0-40
BHS30M	2	152-203	6-8	175	6.88	7940	17450	2133 ⁽¹⁾	84 ⁽¹⁾	1.6	65	0-12	0-40
BHS40M-4	2	152-203	6-8	229	9	10579	23250	1829 ⁽¹⁾	72 ⁽¹⁾	1.6	65	0-12	0-40
BHS40M-8	4	152-203	6-8	175	6.88	5346	11750	-	-	1.6	65	0-12	0-40
BHS50M	4	152-203	6-8	175	6.88	6552	14400	-	-	1.6	65	0-12	0-40
BHS75M	4	203-254	8-10	229	9	9896	21750	-	-	1.6	65	0-12	0-40
BHS100M	4	203-254	8-10	229	9	13104	28800	-	-	1.6	65	0-12	0-40
BHS150M	8	203-254	8-10	229	9	9896	21750	-	-	1.6	65	0-12	0-40
BHS200M	8	203-254	8-10	229	9	13104	28800	-	-	1.6	65	0-12	0-40

WARNING:

This equipment is not to be used for lifting, supporting or transporting people, or lifting or supporting loads over people.

(1) Without trailing trolley or with articulated trolley.

Standard Equipment:



Trolley Bumpers



Limit Switch



Piston Motor Trolley



Corrosion resistant load chain



Galvanized steel chain container



Muffler



Air prep package



Disc brake system



Accu-Trol™ pendent handle

Hercu-Link Air BOP Handling Systems

MODEL DRIVER of Piston Motor Drive – 20 to 200 tons Lifting Capacity

How to Order

Specify the complete model as shown. Specify beam size, type and flange width.

Example: BHS40MA6-30-30-8KR

Series	System Capacity	Suspension	Trolley flange adjustment	Control	-	Lift	-	Control drop	-	Options																						
BHS	40	M	A	6	-	30	-	30	-	8KR																						
BHS = Blowout Preventer Handling System		P = Plain Trolley G = Geared Trolley M = Piston Motor Trolley R = Rack and Pinion Drive		5 = 1 Mtr. Pendant (2 button w/on-off) 6 = 2 Mtr. Pendant (4 button w/on-off) 7 = 3 Mtr. Pendant (6 button w/on-off)		XX = Length of lift		XX = Control drop pendant and or hand chain drop																								
	<table border="1"> <thead> <tr> <th>tons</th> <th>lbs</th> <th># of hoists x cap.</th> </tr> </thead> <tbody> <tr> <td>20</td> <td>44,000</td> <td>(2 x 10 tons)</td> </tr> <tr> <td>30</td> <td>66,000</td> <td>(2 x 15 tons)</td> </tr> <tr> <td>40</td> <td>88,000</td> <td>(2 x 20 tons)</td> </tr> <tr> <td>50</td> <td>110,000</td> <td>(2 x 25 tons)</td> </tr> <tr> <td>75</td> <td>165,000</td> <td>(2 x 37.5 tons)</td> </tr> <tr> <td>100</td> <td>220,000</td> <td>(2 x 50 tons)</td> </tr> <tr> <td>150</td> <td>330,000</td> <td>(2 x 75 tons)</td> </tr> <tr> <td>200</td> <td>440,000</td> <td>(2 x 100 tons)</td> </tr> </tbody> </table>	tons	lbs	# of hoists x cap.	20	44,000	(2 x 10 tons)	30	66,000	(2 x 15 tons)	40	88,000	(2 x 20 tons)	50	110,000	(2 x 25 tons)	75	165,000	(2 x 37.5 tons)	100	220,000	(2 x 50 tons)	150	330,000	(2 x 75 tons)	200	440,000	(2 x 100 tons)		A = standard B = 2" extension C = 4" extension D = 6" extension		8 = 8 Wheel trolley 4 = 4 Wheel trolley 40 ton systems are available with either 4 or 8 wheel trolleys and must be specified in model code. 20 and 30 ton systems have 4 wheels trolleys. 50, 75 and 100 ton systems have 8 wheel trolleys. 150 and 200 ton systems have 16 wheel trolleys. C1 = ABS minus 20°C design temperature (tD) C2 = DNV minus 20°C design temperature (tD) F = Type approval; please specify in text: ABS or DNV K = Clevis (in place of bottom hook) M1 = Per DIN 50049/EN10204 Para 2.2 "Typicals" M2 = Per DIN 50049/EN10204 Para 3.1b actual per product as purchased M3 = Per DIN 50049/EN10204 Para 3.1b actual per product as delivered in final condition P1 = Marine 812-X paint system R = Copper plated (S•COR•E package) The product will be equipped with copper plated load hook(s) and trolley wheels. Zinc plated load and hand chain if applicable. S = Solid bronze (S•COR•E package) Up to 40 ton systems will be equipped with solid bronze trolley wheels W1 = ABS witness test W2 = DNV witness test W3 = LRS witness test W4 = Customer witness test X = Special testing; please specify Z = Sandblast and carbozinc (primer only) -E = Compliance with EC Machinery Directives** **CE package includes: - Overload protection - Emergency stop button - Main air shut-off valve - CE declaration of conformity
tons	lbs	# of hoists x cap.																														
20	44,000	(2 x 10 tons)																														
30	66,000	(2 x 15 tons)																														
40	88,000	(2 x 20 tons)																														
50	110,000	(2 x 25 tons)																														
75	165,000	(2 x 37.5 tons)																														
100	220,000	(2 x 50 tons)																														
150	330,000	(2 x 75 tons)																														
200	440,000	(2 x 100 tons)																														

Notes:

M1 – Material traceability certificates according to EN 10204 (Ex DIN 50049) 2.2 on load bearing parts. This conformity document affirms (by the manufacturer) that parts are in compliance with the requirements of the order based on non-specific inspection and testing (i.e. results are typical material properties for these parts).

M2 – Material traceability certificates according to EN 10204 (Ex DIN 50049) 3.1b on load bearing parts. These documents affirm (by a department independent of the manufacturing department) that the actual parts used in the product are in compliance with the order based on specific inspection and testing (i.e. results are actual material properties for those parts).

M3 – Material traceability certificates according to EN 10204 (Ex DIN 50049) 3.1b on load bearing parts. These documents affirm (by a department independent of the manufacturing department) that the actual parts used in the product are in compliance with the order based on specific inspection and testing (i.e. results are actual material properties for those parts in a finished, as delivered condition).

WARNING: Standard Hercu-Link hoists purchased for BOP handling systems will void the warranty. They are not designed for this type of application.

Liftchain Air or Hydraulic BOP Handling Systems

STANDARD FEATURES AND OPTIONS – 25 to 200 tons Lifting Capacity

Designed to meet or exceed specifications of one or more of the following regulatory bodies - the Norwegian Petroleum Directorate (NPD), UK HSE, Lloyds Register of Shipping (LRS), Det Norske Veritas (DNV), and American Bureau of Shipping (ABS) for the oilwell drilling industry.

Standard Features

- Gear type air motor – hoist and trolley
- 5:1 design factor
- All steel/cast iron construction
- Automatic Fail Safe multi disc, motor brake on hoist and trolley
- Articulated trolley allows limited side pulling operations
- Fully enclosed planetary gear box
- Compact modular design
- Corrosion resistant load chain
- 9m (30 ft) height of lift standard on all models
- Bottom block mounted on bearing with external lubrication point and water drain
- 9m (30 ft) of control (progressive pendent)
- Limit switch for upper and lower over-travel protection.
- Lifting lugs for easy installation
- Filter-Lubricator-Regulator air preparation package mounted on unit
- Corrosion resistant Marine 812 finish paint
- Galvanized steel chain container
- Trolley guide rollers, rubber bumpers, and rail sweeps
- Manufacturer test certificate and maintenance manual
- Exhaust mufflers



BS75LCA3 (75-ton) air system – 1 hoist shown

Options

- Variable lengths of lift and pendent control hose
- Spark and corrosion resistant (S•COR•E) packages
- Rack and pinion trolley drive for positive traction
- Clevis and shackle attachment in lieu of bottom hook
- Air or hydraulic festooning systems
- Trolleys for shipyard fabricated beams
- CE compliant models including overload protection and main emergency stop device
- Corrosion resistant Marine 812-X paint system
- Sandblast and carbozinc (primer only)
- Custom paint coating systems per owners specifications
- Custom designed hydraulic and air control consoles



BS75LCH3 (2 x 75-ton) hydraulic systems used on a rig

Liftchain Air BOP Handling Systems

SPECIFICATIONS AND PERFORMANCE of Gear Motor Drive – 25 to 200 tons Lifting Capacity

Hoist Specifications																
Model No.	System capacity (tons)	Standard lift/Pendent drop		Speed of hoist lift				Hoist motor		Air inlet BSP in.	Chain Size mm	Chain wt./lineal m (ft) of lift		Chain falls per hoist	Net weight of system	
		m	ft	m/min	fpm	m/min	fpm	hp	cfm			kg	lbs		kg	lbs
BS25LCA2P	25	9	30	0.8	2.63	1.50	4.92	4	163	3/4	16 x 45	11	25	2	800	1760
BS30LCA3P	30	9	30	0.6	1.97	1.00	3.28	4	163	3/4	16 x 45	17	38	3	970	2134
BS36LCA3P	36	9	30	0.5	1.64	1.00	3.28	4	163	3/4	16 x 45	17	38	3	970	2134
BS50LCA2P	50	9	30	1.6	5.25	2.50	8.20	10	406	1"1/4	22 x 66	21	47	2	1130	2486
BS50LCA4P	50	9	30	0.4	1.30	0.75	2.46	4	163	3/4	16 x 45	23	50	4	1040	2288
BS75LCA3P	75	9	30	1.1	3.60	1.70	5.58	10	406	1"1/4	22 x 66	32	71	3	4000	8800
BS100LCA4P	100	9	30	0.8	2.60	0.90	2.95	10	406	1"1/4	22 x 66	43	94	4	4400	9680
BS150LCA3P	150	9	30	0.4	1.30	0.48	1.57	10	406	1"1/4	32 x 90	68	151	3	9440	20768
BS200LCA4P	200	9	30	0.3	0.98	0.35	1.16	10	406	1"1/4	32 x 90	91	201	4	9990	21978

Notes:

Air supply hose size must be a minimum 0.25 inch larger dia. than air inlet size.

Trolley Specifications													
Model No.	No. of pairs of wheels per beam	Flange adjustment		Wheel tread diameter		Wheel loading per pair		Min. inside curve radius		Trolley motor		Speed of Trolley	
		mm	in.	mm	in.	kg	lbs	mm	in.	hp	cfm	m/min	fpm
BS25LCA2P	2	131-310	5-12	160	6.30	6250	13750	3	118	2	81	12	39
BS30LCA3P	2	131-310	5-12	225	8.86	7500	16500	5	197	2	81	12	39
BS36LCA3P	2	131-310	5-12	225	8.86	9000	19800	5	197	2	81	12	39
BS50LCA2P	4	160-310	6-12	160	6.30	6250	13750	105	4134	2 (Qty 2)	81 (Qty 2)	12	39
BS50LCA4P	2	131-310	5-12	225	8.86	12500	27500	5	197	2	81	12	39
BS75LCA3P	4	160-310	6-12	225	8.86	9375	20625	105	4134	2 (Qty 2)	81 (Qty 2)	12	39
BS100LCA4P	4	160-310	6-12	225	8.86	12500	27500	105	4134	2 (Qty 2)	81 (Qty 2)	12	39
BS150LCA3P	8	160-310	6-12	225	8.86	9375	20625	130	5118	2 (Qty 4)	81 (Qty 4)	12	39
BS200LCA4P	8	160-310	6-12	225	8.86	12500	27500	130	5118	2 (Qty 4)	81 (Qty 4)	12	39

WARNING:

This equipment is not to be used for lifting, supporting or transporting people, or lifting or supporting loads over people.

Liftchain Air

TiD-extra
Industrial Technologies d.o.o.



Liftchain 200-ton BOP Handling System (1 hoist shown)



Liftchain Hydraulic BOP Handling Systems

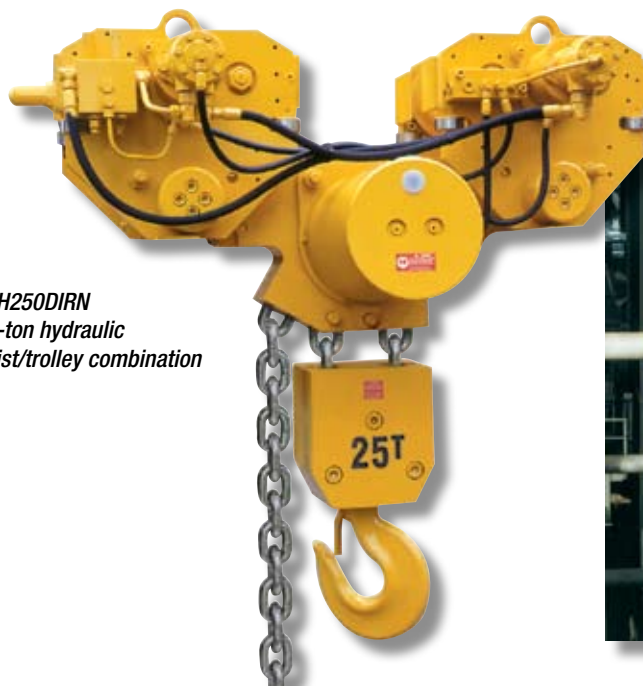
SPECIFICATIONS AND PERFORMANCE – 25 to 200 tons Lifting Capacity

Hoist Specifications

Model No.	System capacity (tons)	Standard lift/ Pendant drop		Speed of hoist lift				Air inlet BSP in.	Chain Size mm	Chain wt./lineal m (ft) of lift		Chain falls per hoist	Net weight of system		Working Pressure		Calibration Pressure		Nominal Flow	
		m	ft	m/min	fpm	m/min	fpm			kg	lbs		bar	psi	bar	psi	l/min	gpm		
BS25LCH2P	25	9	30	2.8	9.19	2.8	9.19	1/2	16 x 45	11.4	25.1	2	770	1694	140	2030	175	2538	48	13
BS30LCH3P	30	9	30	1.9	6.23	1.9	6.23	1/2	16 x 45	17.1	37.7	3	970	2134	140	2030	175	2538	48	13
BS36LCH3P	36	9	30	1.86	6.1	1.86	6.1	1/2	16 x 45	17.1	37.7	3	970	2134	140	2030	175	2538	48	13
BS50LCH2P	50	9	30	2.27	7.45	2.27	7.45	3/4	22 x 66	21.4	47.2	2	2130	4686	175	2538	200	2900	50	13
BS50LCH4P	50	9	30	1.35	4.1	1.35	4.1	1/2	16 x 45	22.8	50.3	4	1090	2398	140	2030	175	2538	48	13
BS75LCH3P	75	9	30	1.51	4.95	1.51	4.95	3/4	22 x 66	32.1	70.8	3	2990	6578	180	2610	210	3045	50	13
BS100LCH4P	100	9	30	1.13	3.7	1.13	3.7	3/4	22 x 66	42.8	94.3	4	3460	7612	177	2567	210	3045	50	13
BS150LCH3P	150	9	30	0.48	1.57	0.48	1.57	3/4	32 x 90	68.4	150.8	3	9880	21736	140	2030	210	3045	35	9
BS200LCH4P	200	9	30	0.36	1.18	0.36	1.18	3/4	32 x 90	91.2	201	4	12390	27258	220	3190	240	3480	35	9

Trolley Specifications

Model No.	No. of pairs of wheels per beam	Flange adjustment		Wheel tread diameter		Wheel loading per pair		Min. inside curve radius		Speed of Trolley		Working Pressure		Calibration Pressure		Nominal Flow	
		mm	in.	mm	in.	kg	lbs	mm	in.	m/min	fpm	bar	psi	bar	psi	l/min	gpm
BS25LCH2P	2	131-310	5-12	160	6.3	6250	13750	3	118.1	15	49	140	2030	165	2393	10	3
BS30LCH3P	2	131-310	5-12	225	8.86	7500	16500	5	196.85	15	49	140	2030	175	2538	10	3
BS36LCH3P	2	131-310	5-12	225	8.86	9000	19800	5	196.85	15	49	140	2030	175	2538	10	3
BS50LCH2P	4	160-310	6-12	160	6.3	6250	13750	105	4134	15	49	150	2175	210	3045	10	3
BS50LCH4P	2	131-310	5-12	225	8.86	12500	27500	5	196.85	15	49	140	2030	175	2538	10	3
BS75LCH3P	4	160-310	6-12	225	8.86	9375	20625	105	4134	15	49	150	2175	210	3045	10	3
BS100LCH4P	4	160-310	6-12	225	8.86	12500	27500	105	4134	15	49	150	2175	210	3045	10	3
BS150LCH3P	8	160-310	6-12	225	8.86	9375	20625	130	5118	15	49	200	2900	210	3045	35	9
BS200LCH4P	8	160-310	6-12	225	8.86	12500	27500	130	5118	15	49	220	3190	250	3625	35	9



LCH250DIRN
25-ton hydraulic hoist/trolley combination



Hydraulic control console allowing the control of four hoist/trolley combinations

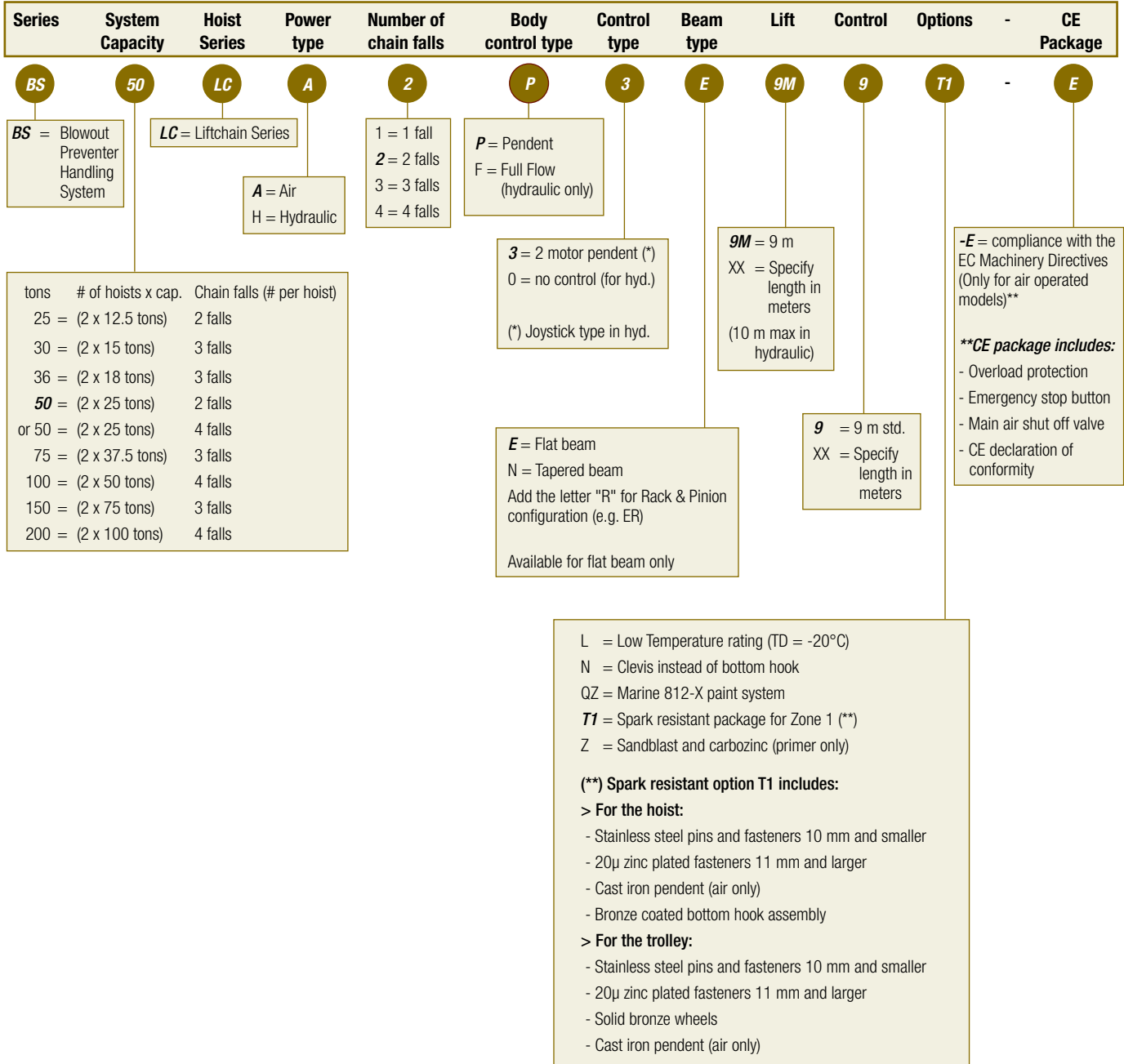
Liftchain Air or Hydraulic BOP Handling Systems

MODEL DRIVER – 25 to 200 tons Lifting Capacity

How to Order

Specify the complete model as shown. Specify beam size, type and flange width. Note that 0 (zero) is a number, not a letter in the model part numbers.

Example: **BS50LCA2P3E9M9T1-E**



Hercu-Link Air BOP Handling Systems

DIMENSIONS AND DRAWINGS of Piston Motor Drive – 20 to 200 tons Lifting Capacity

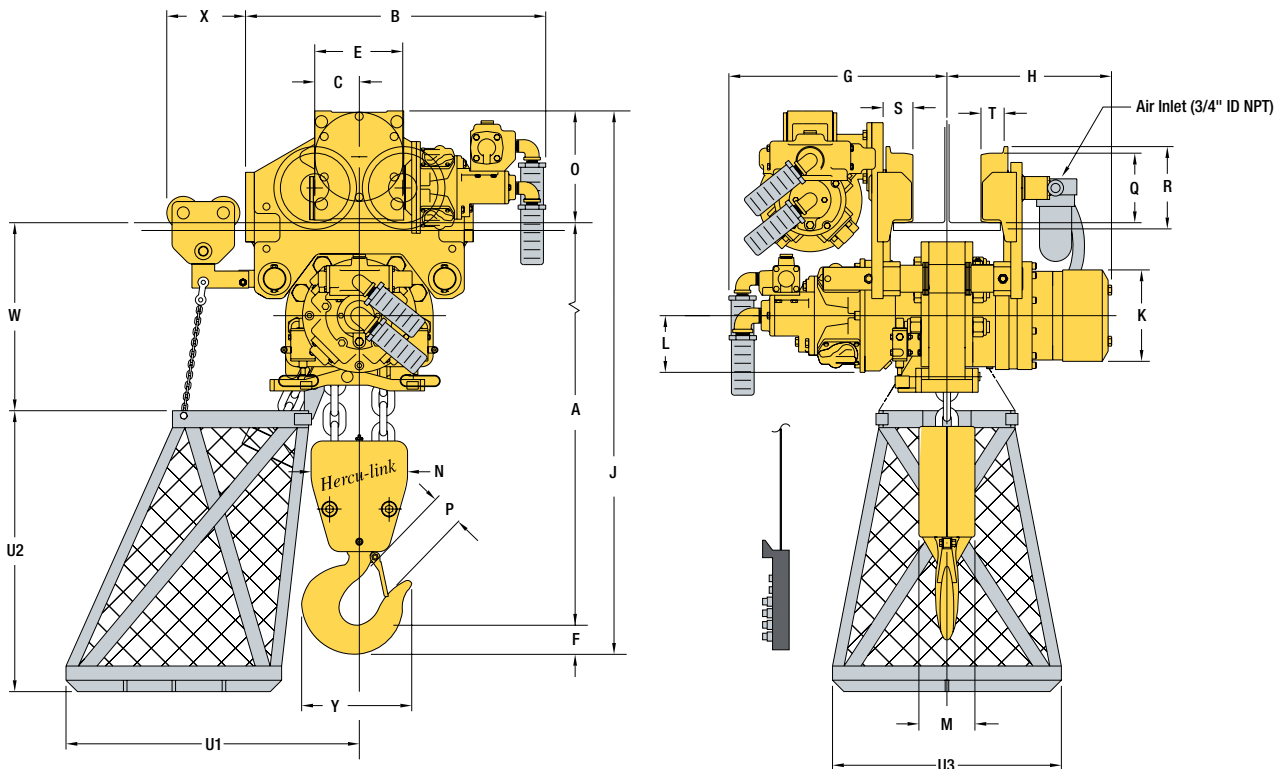
Dimensions (millimeters)																							
Model No.	A	B	C	D	E	F	G	H	J	K	L	M	N	O	P	Q	R	S	T	W	X	Y	Z
BHS20M	813	672	98	-	197	66	483	378	1149	197	127	152	216	256	64	156	184	67	49	503	222	221	-
BHS30M	895	749	114	-	229	76	483	378	1251	197	127	133	254	273	86	175	219	83	65	508	200	279	-
BHS40M-4	903	864	149	-	298	92	540	425	1300	197	127	240	216	310	102	229	289	78	56	495	83	346	-

Dimensions (inches)																							
Model No.	A	B	C	D	E	F	G	H	J	K	L	M	N	O	P	Q	R	S	T	W	X	Y	Z
BHS20M	32	26.44	3.88	-	7.75	2.59	19	14.88	45.25	7.75	5	6	8.5	10.06	2.5	6.13	7.25	2.63	1.94	19.81	8.75	8.69	-
BHS30M	35.25	29.5	4.5	-	9	3	19	14.88	49.25	7.75	5	5.25	10	10.75	3.38	6.88	8.63	3.25	2.56	20	7.88	11	-
BHS40M-4	35.56	34	5.88	-	11.75	3.63	21.25	16.75	51.19	7.75	5	9.44	8.5	12.06	4	9	11.38	3.06	2.19	19.5	3.25	13.63	-

Chain Container Dimensions for 9m (30 ft) standard lift ⁽¹⁾ – millimeters (inches)			
Model No.	U1	U2	U3
BHS20M	658 (25.9)	620 (24.4)	483 (19.0)
BHS30M	787 (31.0)	630 (24.8)	483 (19.0)
BHS40M-4	749 (29.5)	706 (27.8)	533 (21.0)

(1) Chain containers are available with many other dimensions. Please contact Client Services for details.

BHS20M, BHS30M, and BHS40M-4 series (4-wheel trolley models)



Notes:

Dimensions are approximate and subject to change, please contact factory for certified prints.

Allow ± 2% on all dimensions.

Trailing trolley required to support chain container with 10.7m (35.1 ft) of lift or more. Standard on BHS30M.



Hercu-Link Air BOP Handling Systems

DIMENSIONS AND DRAWINGS of Piston Motor Drive – 20 to 200 tons Lifting Capacity

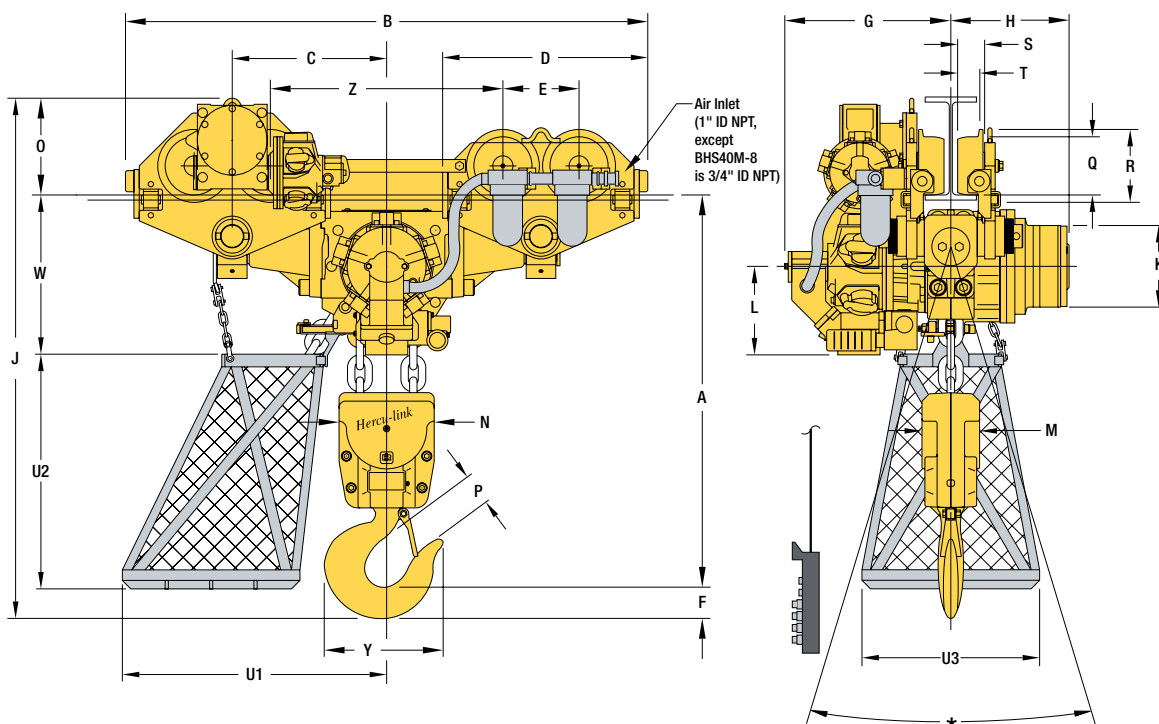
Dimensions (millimeters)																							
Model No.	A	B	C	D	E	F	G	H	J	K	L	M	N	O	P	Q	R	S	T	W	X	Y	Z
BHS40M-8	903	1454	406	616	229	92	540	425	1286	197	127	240	216	291	102	175	219	81	65	438	-	346	584
BHS50M	1040	1568	578	616	229	92	495	362	1422	245	251	175	286	291	102	175	219	81	65	484	-	346	699
BHS75M	1243	1648	610	673	298	129	572	438	1702	245	251	283	286	330	121	229	289	78	57	487	-	392	622
BHS100M	1346	1648	610	673	298	165	572	438	1842	245	251	321	286	330	165	229	289	78	57	487	-	622	622

Dimensions (inches)																							
Model No.	A	B	C	D	E	F	G	H	J	K	L	M	N	O	P	Q	R	S	T	W	X	Y	Z
BHS40M-8	35.56	57.25	16	24.25	9	3.63	21.25	16.75	50.63	7.75	5	9.44	8.5	11.44	4	6.88	8.63	3.19	2.56	17.25	-	13.63	23
BHS50M	40.94	61.75	22.75	24.25	9	3.63	19.5	14.25	56	9.63	9.88	6.88	11.25	11.44	4	6.88	8.63	3.19	2.56	19.06	-	13.63	27.5
BHS75M	48.94	64.88	24	26.5	11.75	5.06	22.5	17.25	67	9.63	9.88	11.13	11.25	13	4.75	9	11.38	3.06	2.25	19.19	-	15.44	24.5
BHS100M	53	64.88	24	26.5	11.75	6.5	22.5	17.25	72.5	9.63	9.88	12.63	11.25	13	6.5	9	11.38	3.06	2.25	19.19	-	20.63	24.5

Chain Container Dimensions for 9m (30 ft) standard lift ⁽¹⁾ – millimeters (inches)			
Model No.	U1	U2	U3
BHS40M-8	749 (29.5)	706 (27.8)	533 (21.0)
BHS50M	795 (31.3)	706 (27.8)	533 (21.0)
BHS75M	886 (34.9)	859 (33.8)	610 (24.0)
BHS100M	922 (36.3)	935 (36.8)	635 (25.0)

(1) Chain containers are available with many other dimensions. Please contact Client Services for details.

BHS40M-8, BHS50M, BHS75M, and BHS100M series (8-wheel trolley models)



Notes:

Dimensions are approximate and subject to change, please contact factory for certified prints. Allow ± 2% on all dimensions.

(*) Contact Client Services for specifications.



Liftchain Air and Hydraulic BOP Handling Systems

DIMENSIONS AND DRAWINGS – 25 to 200 tons Lifting Capacity

Dimensions (millimeters)													
Model No.	A	B	C	D	E	F	G	H	I	J	K	L	M
LCA Air Series													
BS25LCA2P	1128	500	120	-	240	67	318	253	338	1415	228	85	150
BS30LCA3P	1242	642	156	-	312	80	377	311	342	1592	228	85	200
BS36LCA3P	1242	642	156	-	312	80	377	311	342	1592	228	85	200
BS50LCA4P	1290	642	156	-	312	94	377	311	342	1606	228	85	200
LCH Hydraulic Series													
BS25LCH2P	1128	500	120	-	240	67	318	253	357	1415	228	143	150
BS30LCH3P	1242	642	156	-	312	80	377	311	360	1592	228	143	200
BS36LCH3P	1242	642	156	-	312	80	377	311	360	1592	228	143	200
BS50LCH4P	1290	642	156	-	312	94	377	311	360	1606	228	143	200
Dimensions (millimeters)													
Model No.	N	O	P	Q	R	S	T	U	V	W	X	Y	Z
LCA Air Series													
BS25LCA2P	203	220	58	160	200	48	68	-	58	739	-	222	-
BS30LCA3P	206	270	78	225	272	56	80	-	58	797	-	283	-
BS36LCA3P	206	270	78	225	272	56	80	-	58	797	-	283	-
BS50LCA4P	235	270	87	225	272	56	80	-	58	797	-	339	-
LCH Hydraulic Series													
BS25LCH2P	203	220	58	160	200	48	68	-	58	739	-	222	-
BS30LCH3P	206	270	78	225	272	56	80	-	58	797	-	283	-
BS36LCH3P	206	270	78	225	272	56	80	-	58	797	-	283	-
BS50LCH4P	235	270	87	225	272	56	80	-	58	797	-	339	-
Dimensions (inches)													
Model No.	A	B	C	D	E	F	G	H	I	J	K	L	M
LCA Air Series													
BS25LCA2P	44.41	19.68	4.72	-	9.45	2.64	12.52	9.96	13.3	55.7	8.98	3.35	5.9
BS30LCA3P	48.9	25.27	6.14	-	12.28	3.15	14.84	12.24	13.46	62.68	8.98	3.35	7.87
BS36LCA3P	48.9	25.27	6.14	-	12.28	3.15	14.84	12.24	13.46	62.68	8.98	3.35	7.87
BS50LCA4P	50.79	25.27	6.14	-	12.28	3.7	14.84	12.24	13.46	63.23	8.98	3.35	7.87
LCH Hydraulic Series													
BS25LCH2P	44.41	19.68	4.72	-	9.45	2.64	12.52	9.96	14.05	55.7	8.98	5.63	5.9
BS30LCH3P	48.9	25.27	6.14	-	12.28	3.15	14.84	12.24	14.17	62.68	8.98	5.63	7.87
BS36LCH3P	48.9	25.27	6.14	-	12.28	3.15	14.84	12.24	14.17	62.68	8.98	5.63	7.87
BS50LCH4P	50.79	25.27	6.14	-	12.28	3.7	14.84	12.24	14.17	63.23	8.98	5.63	7.87
Dimensions (inches)													
Model No.	N	O	P	Q	R	S	T	U	V	W	X	Y	Z
LCA Air Series													
BS25LCA2P	7.99	8.66	2.28	6.3	7.87	1.89	2.68	-	2.28	29.09	-	8.74	-
BS30LCA3P	8.11	10.63	3.07	8.86	10.71	2.2	3.15	-	2.28	31.38	-	11.14	-
BS36LCA3P	8.11	10.63	3.07	8.86	10.71	2.2	3.15	-	2.28	31.38	-	11.14	-
BS50LCA4P	9.25	10.63	3.42	8.86	10.71	2.2	3.15	-	2.28	31.38	-	13.35	-
LCH Hydraulic Series													
BS25LCH2P	7.99	8.66	2.28	6.3	7.87	1.89	2.68	-	2.28	29.09	-	8.74	-
BS30LCH3P	8.11	10.63	3.07	8.86	10.71	2.2	3.15	-	2.28	31.38	-	11.14	-
BS36LCH3P	8.11	10.63	3.07	8.86	10.71	2.2	3.15	-	2.28	31.38	-	11.14	-
BS50LCH4P	9.25	10.63	3.42	8.86	10.71	2.2	3.15	-	2.28	31.38	-	13.35	-

tid-extra
 Industrial Technologies d.o.o.
 Liftchain Dimensions and Drawings

Liftchain Air and Hydraulic BOP Handling Systems

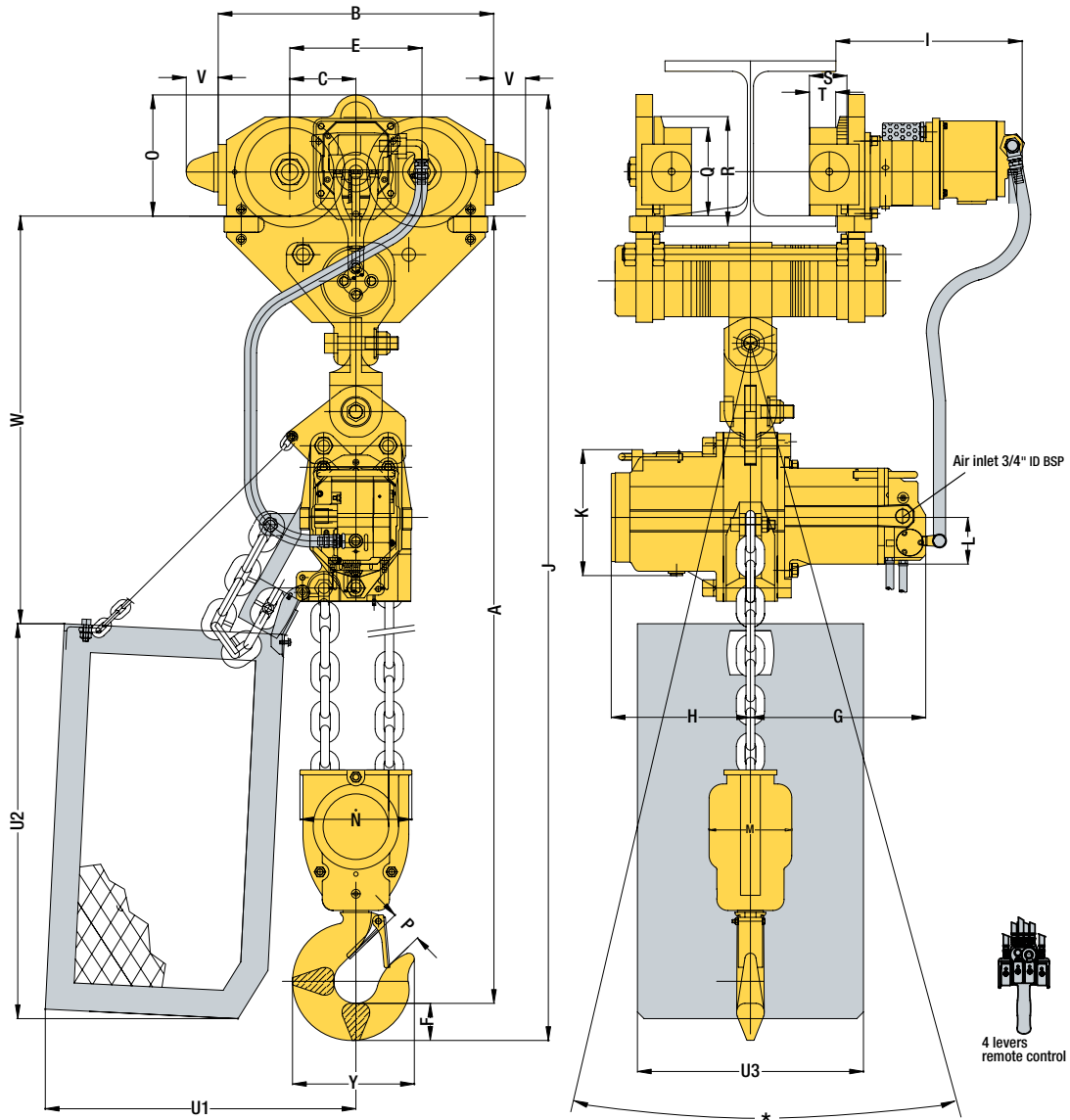
DIMENSIONS AND DRAWINGS – 25 to 200 tons Lifting Capacity

Chain Container Dimensions for 9m (30 ft) standard lift ⁽¹⁾ – millimeters (inches)

Model No.	U1	U2	U3
BS25LC_2P	565 (22.24)	720 (28.35)	400 (15.75)
BS30LC_3P	565 (22.24)	720 (28.35)	400 (15.75)
BS36LC_3P	565 (22.24)	720 (28.35)	400 (15.75)
BS50LC_4P	565 (22.24)	720 (28.35)	550 (21.65)

(1) Chain containers are available with many other dimensions. Please contact Client Services for details.

BS25LC_2 - BS30LC_3 - BS36LC_3 - BS50LC_4 series



Notes:

Dimensions are approximate and subject to change, please contact factory for certified prints.
Allow $\pm 2\%$ on all dimensions.

(*) Contact Client Services for specifications.



Liftchain Air and Hydraulic BOP Handling Systems

DIMENSIONS AND DRAWINGS – 25 to 200 tons Lifting Capacity

Dimensions (millimeters)													
Model No.	A	B	C	D	E	F	G	H	I	J	K	L	M
Liftchain Air Series													
BS50LCA2P	976	1240	370	500	240	97	492	367	342	1293	223	196	190
BS75LCA3P	1170	1552	455	642	312	132	547	472	360	1572	223	196	278
BS100LCA4P	1392	1552	455	642	312	152	547	472	360	1662	223	196	281
Liftchain Hydraulic Series													
BS50LCH2P	976	1240	370	500	240	97	446	265	357	1293	298	137	190
BS75LCH3P	1170	1552	455	642	312	132	500	372	360	1572	298	137	278
BS100LCH4P	1392	1552	455	642	312	152	500	372	360	1662	298	137	281

Dimensions (millimeters)													
Model No.	N	O	P	Q	R	S	T	U	V	W	X	Y	Z
Liftchain Air Series													
BS50LCA2P	276	220	82	160	200	48	68	-	58	436	-	339	500
BS75LCA3P	298	270	103	225	272	56	80	-	58	494	-	384	598
BS100LCA4P	352	270	118	225	272	56	80	-	58	494	-	384	598
Liftchain Hydraulic Series													
BS50LCH2P	276	220	82	160	200	48	68	-	58	436	-	339	500
BS75LCH3P	298	270	103	225	272	56	80	-	58	494	-	384	598
BS100LCH4P	352	270	118	225	272	56	80	-	58	494	-	384	598

Dimensions (inches)													
Model No.	A	B	C	D	E	F	G	H	I	J	K	L	M
Liftchain Air Series													
BS50LCA2P	38.42	48.82	14.57	19.68	9.45	3.82	19.37	14.45	13.46	50.9	8.78	7.72	7.48
BS75LCA3P	46.06	61.1	17.91	25.28	12.28	5.2	21.5	18.58	14.17	61.89	8.78	7.72	10.94
BS100LCA4P	54.8	61.1	17.91	25.28	12.28	5.98	21.5	18.58	14.17	65.43	8.78	7.72	11.06
Liftchain Hydraulic Series													
BS50LCH2P	38.42	48.82	14.57	19.68	9.45	3.82	17.56	10.43	14.05	50.9	11.73	5.39	7.48
BS75LCH3P	46.06	61.1	17.91	25.28	12.28	5.2	19.68	14.64	14.17	61.89	11.73	5.39	10.94
BS100LCH4P	54.8	61.1	17.91	25.28	12.28	5.98	19.68	14.64	14.17	65.43	11.73	5.39	11.06

Dimensions (inches)													
Model No.	N	O	P	Q	R	S	T	U	V	W	X	Y	Z
Liftchain Air Series													
BS50LCA2P	10.87	8.66	3.23	6.3	7.87	1.89	2.68	-	2.28	17.16	-	13.35	19.68
BS75LCA3P	11.73	10.63	4.05	8.86	10.71	2.2	3.15	-	2.28	19.45	-	15.12	23.54
BS100LCA4P	11.73	10.63	4.65	8.86	10.71	2.2	3.15	-	2.28	19.45	-	15.12	23.54
Liftchain Hydraulic Series													
BS50LCH2P	10.87	8.66	3.23	6.3	7.87	1.89	2.68	-	2.28	17.16	-	13.35	19.68
BS75LCH3P	11.73	10.63	4.05	8.86	10.71	2.2	3.15	-	2.28	19.45	-	15.12	23.54
BS100LCH4P	11.73	10.63	4.65	8.86	10.71	2.2	3.15	-	2.28	19.45	-	15.12	23.54

Liftchain Air and Hydraulic BOP Handling Systems

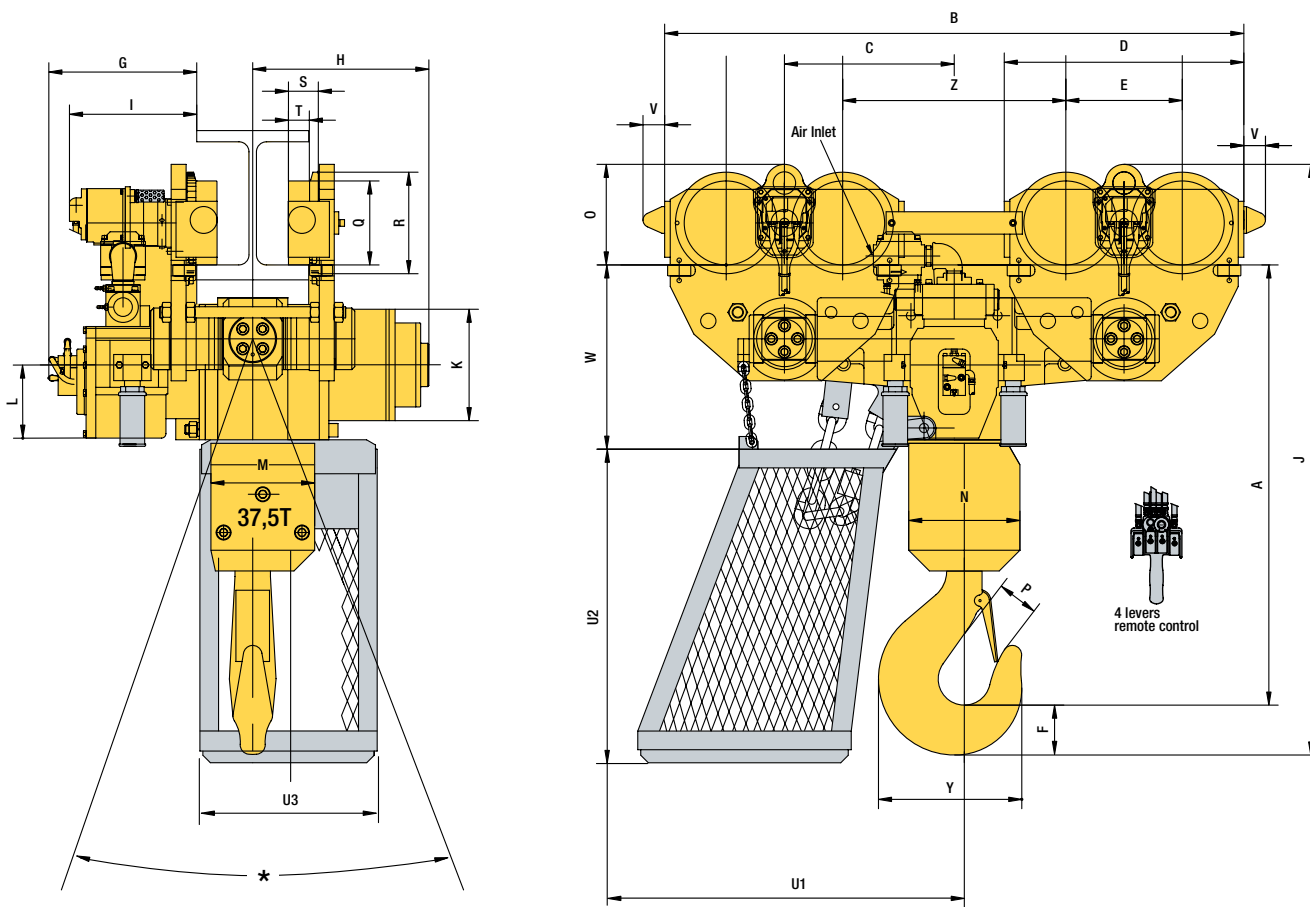
DIMENSIONS AND DRAWINGS – 25 to 200 tons Lifting Capacity

Chain Container Dimensions for 9m (30 ft) standard lift ⁽¹⁾ – millimeters (inches)

Model No.	U1	U2	U3
BS50LC_2P	850 (33.46)	840 (33.07)	800 (31.50)
BS75LC_3P	955 (37.60)	1055 (41.54)	800 (31.50)
BS100LC_4P	955 (37.60)	1055 (41.54)	800 (31.50)

(1) Chain containers are available with many other dimensions. Please contact Client Services for details.

BS50LC_2 - BS75LC_3 - BS100LC_4 series



Notes:

Dimensions are approximate and subject to change, please contact factory for certified prints. Allow ± 2% on all dimensions.

(*) Contact Client Services for specifications.

Liftchain Air and Hydraulic BOP Handling Systems

DIMENSIONS AND DRAWINGS – 25 to 200 tons Lifting Capacity

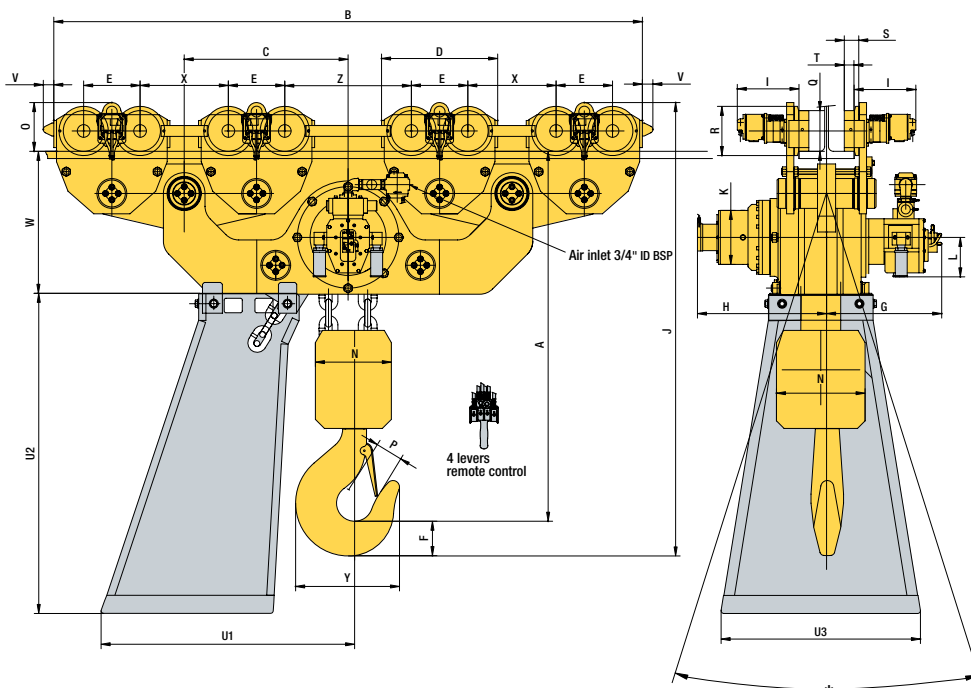
Dimensions – millimeters (inches)													
Model No.	A	B	C	D	E	F	G	H	I	J	K	L	M
Liftchain Air Series													
BS150LCA3P	1845 (73)	3254 (128)	906 (36)	642 (25)	312 (12)	190 (7)	714 (28)	714 (28)	360 (14)	2305 (91)	298 (12)	196 (8)	490 (19)
BS200LCA4P	1901 (75)	3254 (128)	906 (36)	642 (25)	312 (12)	212 (8)	714 (28)	714 (28)	360 (14)	2383 (94)	298 (12)	196 (8)	430 (17)
Liftchain Hydraulic Series													
BS150LCH3P	1845 (73)	3254 (128)	906 (36)	642 (25)	312 (12)	190 (7)	528 (21)	684 (27)	360 (14)	2305 (91)	298 (12)	199 (8)	490 (20)
BS200LCH4P	1901 (75)	3254 (128)	906 (36)	642 (25)	312 (12)	212 (8)	528 (21)	684 (27)	360 (14)	2383 (94)	298 (12)	199 (8)	430 (17)

Dimensions – millimeters (inches)													
Model No.	N	O	P	Q	R	S	T	U	V	W	X	Y	Z
Liftchain Air Series													
BS150LCA3P	420 (17)	270 (11)	152 (6)	225 (9)	272 (11)	56 (2)	80 (3)	-	58 (2)	790 (31)	-	574 (23)	700 (28)
BS200LCA4P	490 (19)	270 (11)	180 (7)	225 (9)	272 (11)	56 (2)	80 (3)	-	58 (2)	790 (31)	-	606 (24)	700 (28)
Liftchain Hydraulic Series													
BS150LCH3P	420 (17)	270 (11)	152 (6)	225 (9)	272 (11)	56 (2)	80 (3)	-	58 (2)	790 (31)	488 (19)	574 (23)	700 (28)
BS200LCH4P	490 (19)	270 (11)	180 (7)	225 (9)	272 (11)	56 (2)	80 (3)	-	58 (2)	790 (31)	488 (19)	606 (24)	700 (28)

Chain Container Dimensions for 9m (30 ft) standard lift ⁽¹⁾ – millimeters (inches)			
Model No.	U1	U2	U3
BS150LC_3P	1200 (47.24)	1200 (47.24)	920 (36.22)
BS200LC_4P	1200 (47.24)	1200 (47.24)	920 (36.22)

(1) Chain containers are available with many other dimensions. Please contact Client Services for details.

BS150LC_3 - BS200LC_4 series



Notes:

Dimensions are approximate and subject to change, please contact factory for certified prints. Allow $\pm 2\%$ on all dimensions.

(*) Contact Client Services for specifications.

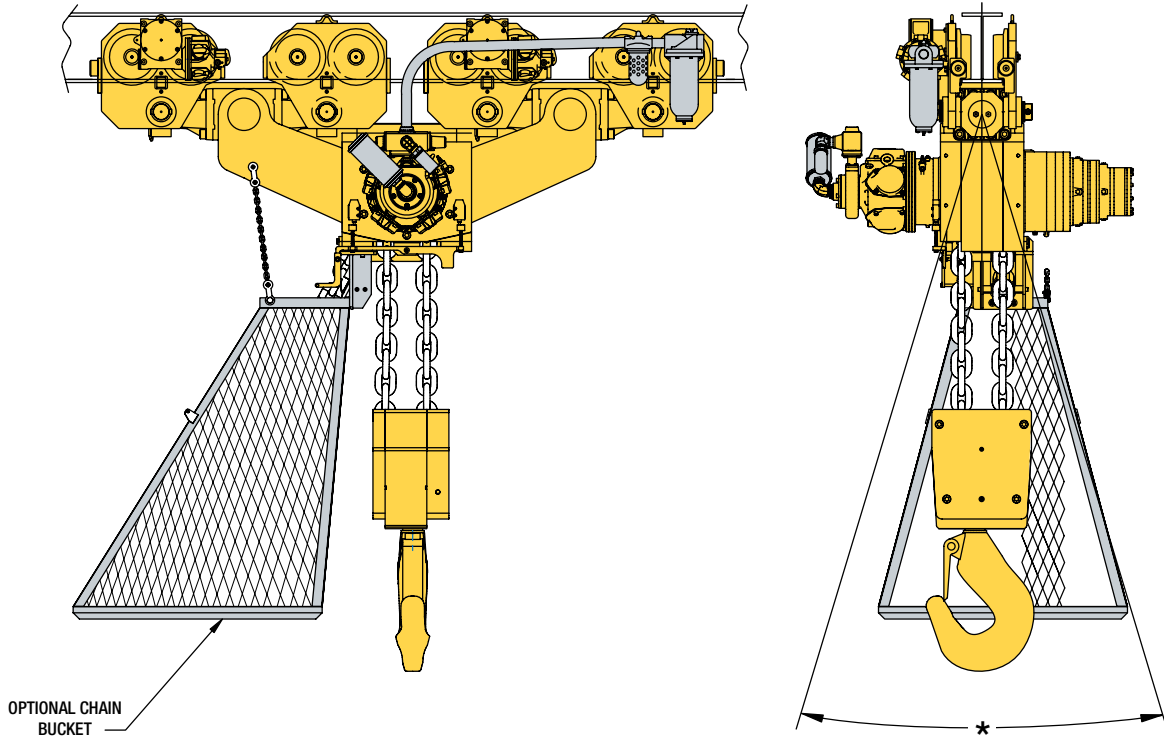


BOP Handling Systems

ENGINEERED SOLUTIONS

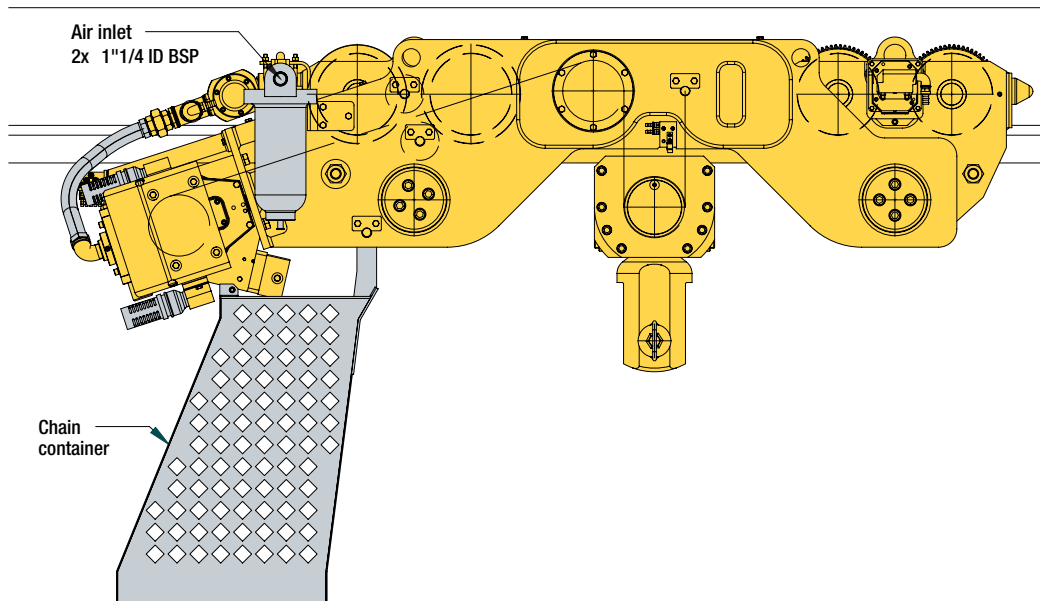
For further information, technical support, or a quotation on one of our engineered BOP handling systems, please contact Client Services.

BHS150M and BHS200M series



TiD-extra
Industrial Technologies d.o.o.

ULBS100LCA4 series (Ultra-low headroom design)



Engineered Solutions



Contact Information

WORLDWIDE LOCATIONS

Office and distributors in principal cities throughout the world. Contact the nearest Ingersoll Rand office for the name and address of the distributor in your country or write to: Ingersoll Rand, 2724 6th Avenue South, Seattle, WA 98134-0046 USA.

United States Offices

For Order Entry and Order Status:

Ingersoll Rand Distribution Center

510 Hester Drive, P.O. Box 618, White House, TN 37188
Phone: (866) IR4-TOOL Fax: (615) 285-0802
(866) 474-2665

For Technical Support:

Client Services

2724 Sixth Avenue South, Seattle, WA 98134
Phone: (206) 624-0466 Fax: (206) 624-6265
Toll free: (866) 273-3278
E-mail: WinchandHoistSolutions@irco.com

Canada

National Sales Office

Toronto, Ontario

51 Worcester Road, Rexdale, Ontario M9W 4K2
Phone: (877) 924-7435 Fax: (416) 213-4510
Order Desk: (877) 924-7435 Fax: (416) 213-4506

Mexico

Ingersoll Rand S.A. de C.V.

Boulevard Centro Industrial No.11
Industrial Puente de Vigas
54070 Tlalnepantla, Estado de México
Phone: 52 (55) 85 03 66 00 Fax: 52 (55) 55 65 30 72
Ext. 6627 & 6628
E-mail: mexicot&h@irco.com

International

Brazil

Alameda Caiapós 311
Tamboré - Barueri - São Paulo - Brazil 06460-110
Phone: 55-11-2109 . 8950 Fax: 55-11-2109 . 8998

Europe, Middle East and Africa

Ingersoll Rand Material Handling – Douai Operations

529, avenue Roger Salengro, 59450 SIN LE NOBLE, France
Phone: (33) 3-27-93-08-08 Fax: (33) 3-27-93-08-19
E-mail: dou_irep@eu.irco.com

Ingersoll Rand SEA Pte. Ltd.

42 Benoi Road, Jurong 629903, Singapore
Phone: 65-6861-1555 Fax: 65-6862-1373

China Ingersoll Rand Co.

7F, Xuhui Yuan Building
1089 Zhong Shan Nan 2 Road, Shanghai 200030, China
Phone: 86-21-5452 9898 Fax: 86-21-54101110

Ingersoll Rand India

Ingersoll Rand Wadco Tools Ltd.
19, Chetak Apartments, Sheth Motisha Lane (Love Lane)
Mazagon, Mumbai 40010 India
Phone: 91-120-48955116 (-126) Fax: 91-120-4895127



Call 1-800-IR HOIST (474-6478) for the distributor nearest you.

Visit our web site at:

www.WinchandHoistSolutions.com



WARNING: This equipment is not designed for transporting people or lifting loads over people. It is the user's responsibility to determine the suitability of this product for any particular use and to check compliance with applicable regulations. Before installation, see maintenance and operations manual for additional warnings and precautions.



© 2006 Ingersoll-Rand Company Limited Form No. MHD55148/031006/Printed in U.S.A./1500